



Forest, Parks and Wildlife Department
Government of Gilgit-Baltistan

Study Report
2023

WETLANDS & LAKES OF BALTISTAN REGION



PARKS & WILDLIFE
GILGIT-BALTISTAN



FOREST
DEPARTMENT
Gilgit-Baltistan

STUDY REPORT 2023

WETLANDS & LAKES OF BALTISTAN REGION GILGIT-BALTISTAN, PAKISTAN

Report Published by: Forest, Parks & Wildlife Department Government of Gilgit-Baltistan under the ADP Project “Participatory Conservation and Management of Selected Wetlands of Gilgit-Baltistan”



Available from: Wildlife & Parks Circle, Forest Complex, Jutial, Gilgit, Gilgit-Baltistan, Pakistan

Tel: +92 5811-920146

Fax: +92 5811-920273

Website: <https://fwegb.gov.pk>



STUDY REPORT 2023

WETLANDS & LAKES OF BALTISTAN REGION IN GILGIT-BALTISTAN, PAKISTAN

Authors: Syed Naeem Abbas, Dr. Jibran Haider, Nooruddin, Dr. Muhammad Zaman, & Dr. Ayesha Akram

Supervisor: Dr. Zakir Hussain, Ijlal Ahmed, & Khadim Abbas

GIS and Spatial Analysis: Syed Naeem Abbas & Nooruddin

Photographs: Syed Naeem Abbas, Nooruddin, Ghulam Mehdi & other images used in this report are available under Creative Commons License.

Design and Printing: Essential Solutions (Pvt) Ltd

Disclaimer

The opinions and spatial demarcations included in this document are those of the authors and are not endorsed by, nor do they necessarily reflect, the opinion of any of the departments involved in the formulation of this report, concerning the legal status of any country, territory, or area, or concerning the delimitation of its frontiers or boundaries.

Table of Contents

INTRODUCTION	4
Wetland Types	5
Ecological Importance.....	5
Socio-economic Importance	5
Wetlands Flora	6
Threats	6
Conservation Efforts	6
Challenges	6
STUDY CONTEXT.....	7
FINDINGS	10
Cataloged Lakes of Baltistan	11
Maps and Charts	33
Number and Density of Lakes in Baltistan	33
Categorized Lakes and Wetland of Baltistan	34
Location of Lakes and Wetland of Baltistan	35
Important Lakes and Wetland of Baltistan	36
Tracks to Major Lakes of Skardu	37
Tracks to Major Lakes of Kharmang.....	38
Tracks to Major Lakes of Shigar	39
Tracks to Major Lakes of Ghanche	40
Basic Information and Topography of Major Lakes.....	41
REFERENCES	44

INTRODUCTION

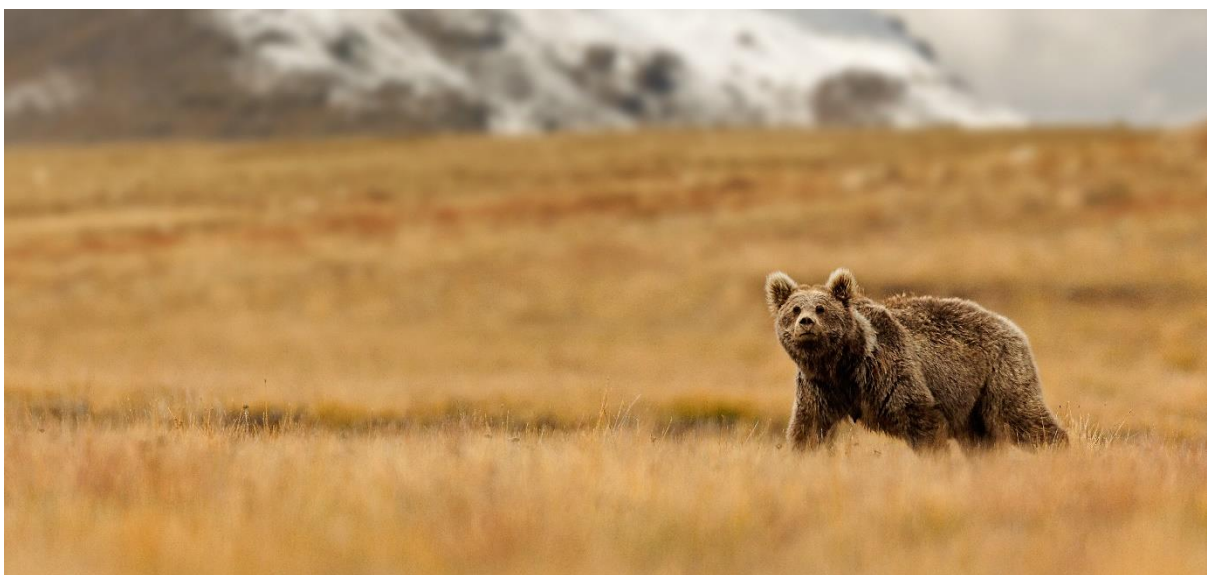
Gilgit Baltistan is a mountainous region in northern Pakistan, bordering China, India, and Afghanistan. The region is home to a diverse range of wetlands, including high-altitude lakes, alpine bogs, marshes, and rivers. These wetlands are of great ecological and socio-economic importance, providing a range of ecosystem services, such as water resources, flood control, carbon sequestration, and habitat for a wide variety of flora and fauna.



Many of the wetlands in Gilgit Baltistan are unique and fragile ecosystems, with high levels of biodiversity and many endemic species. For example, Sheosar Lake, located in Deosai National Park (DNP), is a high-altitude lake that supports a range of aquatic and terrestrial species, including several fish species of commercial importance.

However, the wetlands in Gilgit Baltistan are also under pressure from various anthropogenic activities, including overgrazing, agricultural expansion, and infrastructure development. Climate change is also expected to have significant impacts on the region's wetlands, particularly in terms of changes in water availability and temperature.

To ensure the long-term sustainability of wetlands in Gilgit Baltistan, there is a need for better management and conservation practices that take into account the ecological and socio-economic significance of these ecosystems. This includes the development of effective policies and strategies for wetland conservation, as well as the involvement of local communities in the management and conservation of these important ecosystems.



Wetland Types

The wetlands in Gilgit Baltistan are diverse in terms of their type and location. They include high-altitude lakes, alpine bogs, marshes, and rivers. Some of the notable wetlands in the region include Sheosar Lake, Blind Lake, Phander Lake, and Attabad Lake.

Ecological Importance

The wetlands in Gilgit Baltistan provide a range of ecological services, including water resources, carbon sequestration, and habitat for a diverse range of flora and fauna. The region's wetlands are also important breeding and staging areas for several migratory bird species.

Socio-economic Importance

The wetlands in Gilgit Baltistan also provide a range of socio-economic benefits to local communities. They are a source of water for irrigation and drinking, provide grazing lands for livestock, and support fisheries and other economic activities.

Wetlands Flora

The Gilgit Baltistan region is known for its diverse landscapes, which include wetlands. Wetlands are ecologically important areas that provide habitats for a wide range of plant and animal species. The most common emergent species are found in the large families of monocotyledons that tend to dominate both freshwater and saltwater marshes, i.e., the Poaceae (grasses), Cyperaceae (sedges, e.g., *Carex*, *Cyperus*), Juncaceae (rushes), and the Typhaceae (cattail). Other families with frequently encountered emergent species are the Alismataceae (water plantain), Araceae (arum), Asteraceae (aster), Lamiaceae (mint, e.g., *Lycopus*, *Mentha*), Polygonaceae (smartweed), and Sparganiaceae (bur reed) (Vymazal, 2013). Examples of families in which all or nearly all of the species are submerged include the Callitrichaceae (water starwort), Ceratophyllaceae (hornwort), Haloragaceae (watermilfoil), Potamogetonaceae (pondweeds), and Lentibulariaceae (bladderworts). A widespread family of free-floating plants is the Lemnaceae, which includes the genera *Lemna* (duckweed), *Spirodela* (greater duckweed), and *Wolffiella* and *Wolfia* (watermeal). Riparian vegetation includes trees such as willows (*Salix* spp.), alders (*Alnus* spp.), and cottonwoods (*Populus* spp.), as well as shrubs like dogwoods (*Cornus* spp.) and elderberries (*Sambucus* spp.).

Threats

The wetlands in Gilgit Baltistan are under threat from various anthropogenic activities, including overgrazing, agricultural expansion, and infrastructure development. Climate change is also expected to have significant impacts on the region's wetlands, particularly in terms of changes in water availability and temperature.

Conservation Efforts

There have been several conservation efforts aimed at preserving the wetlands in Gilgit Baltistan. These include the establishment of protected areas, such as Deosai National Park, and the development of community-based conservation initiatives.

Challenges

However, several challenges need to be addressed to ensure the effective conservation of wetlands in Gilgit Baltistan. These include the lack of awareness and capacity among local communities and government officials, the limited availability of financial resources, and the absence of effective policies and regulations for wetland conservation.

Overall, the wetlands of Gilgit Baltistan are of great ecological and socio-economic significance, and their conservation is essential for the long-term sustainability of the region's natural resources and the well-being of its people.



STUDY CONTEXT

Gilgit Baltistan, located in the northern region of Pakistan, is a unique geographical area with diverse topography, including glaciers, mountains, and wetlands. Wetlands are an essential ecosystem that provides numerous ecological, social, and economic benefits. Several studies have focused on wetlands in Gilgit Baltistan to understand their ecology and conservation status.



Another study by Ahmad et al. (2021) focused on the hydrological characteristics of Rush Lake, a high-altitude lake in Gilgit Baltistan. The study found that the lake's water level was influenced by both precipitation and snowmelt, and the lake's water quality was relatively good. However, the study also highlighted the need for better management of the lake's catchment area to ensure the long-term sustainability of the lake.

In a study by Abbas et al. (2020), the authors assessed the potential for using remote sensing and GIS for the monitoring and management of wetlands in Gilgit Baltistan. The study found that remote sensing and GIS could be useful tools for assessing wetland extent, changes in land use, and ecological health. The study highlighted the need for further research to develop effective remote sensing and GIS-based tools for wetland management in the region.



In a study by Shah et al. (2020), the authors assessed the ecosystem services provided by wetlands in Gilgit Baltistan. The study found that the wetlands provided several ecosystem services, including water purification, flood control, and carbon sequestration. The study also highlighted the need for better management and conservation of wetlands to ensure the continued provision of these ecosystem services.

In a study by Ali et al. (2019), the authors assessed the potential for ecotourism development in wetlands in Gilgit Baltistan. The study found that wetlands had significant ecotourism potential, particularly for birdwatching and nature-based activities. The study also highlighted the need for better infrastructure and management to ensure the sustainable development of ecotourism in the region.

In a study by Amin et al. (2019), the authors assessed the impact of climate change on wetlands in Gilgit Baltistan. The study found that climate change was likely to have significant impacts on the wetlands, including changes in water availability and temperature. The study highlighted the need for better adaptation strategies to minimize the impacts of climate change on wetlands in the region.

In another study by Aziz et al. (2019), the authors assessed the impact of land use change on the ecological health of wetlands in Gilgit Baltistan. The study found that land use change, particularly the conversion of wetlands to agricultural lands, was a major threat to the ecological health of wetlands in the region. The study highlighted the need for better land use planning to ensure the conservation of wetlands.

One such study was conducted by Hussain et al. (2019), who assessed the ecological status of Kanday Nallah, a freshwater wetland in Gilgit Baltistan. The study found that the wetland was highly productive, with diverse flora and fauna. However, the wetland was also facing several anthropogenic pressures, including solid waste disposal and overfishing, which could impact the wetland's ecological health.



In a study by Mahmood et al. (2019), the authors assessed the physicochemical properties of Phander Lake, a high-altitude lake in Gilgit Baltistan. The study found that the lake had good water quality, but the lake's ecosystem was under pressure from anthropogenic activities, such as fishing and grazing.

In a study by Ali et al. (2018), the authors assessed the biodiversity and conservation status of wetlands in Gilgit Baltistan. The study found that the wetlands supported a diverse range of flora and fauna, including many threatened species. The study also highlighted the need for better conservation management of these wetlands to ensure their long-term sustainability.

In a study by Hussain et al. (2018), the authors assessed the fish diversity and distribution in the wetlands of Gilgit Baltistan. The study found that wetlands supported a diverse range of fish species, many of which were of commercial importance. The study also highlighted the need for better fisheries management to ensure the sustainability of fish populations in wetlands.



In another study by Ali et al. (2017), the authors conducted a vegetation analysis of wetlands in Gilgit Baltistan. The study found that the wetlands supported a diverse range of plant species, including medicinal plants. The study also highlighted the need for better conservation management of these wetlands, as many of them were threatened by overgrazing and other anthropogenic activities.

In a study by Ali et al. (2016), the authors assessed the socio-economic importance of wetlands in Gilgit Baltistan. The study found that wetlands provided a range of benefits to local communities, including water resources, grazing lands, and fuelwood. The study also highlighted the need for better management and conservation of wetlands to ensure their continued provision of these benefits.

Similarly, another study by Hussain et al. (2015) assessed the plant diversity of the wetlands in Gilgit Baltistan. The study found that the wetlands supported a diverse range of plant species, including rare and threatened species. However, the study also highlighted the need for better conservation management of these wetlands, as many of them were under threat from anthropogenic activities.

In addition to these studies, several other research works have focused on the wetlands of Gilgit Baltistan, including studies on the conservation status of wetlands, the socioeconomic benefits of wetlands, and the impacts of climate change on wetlands. Overall, these studies highlight the importance of wetlands in Gilgit Baltistan and the need for their conservation and sustainable management. The studies also emphasize the need for a better understanding of wetland ecology and the impacts of anthropogenic activities and climate change on wetlands in the region. These studies provide further insights into the importance of wetlands in Gilgit Baltistan, their ecological and socio-economic significance, and the need for their sustainable management and conservation.



FINDINGS

In an effort to provide baseline data about the lakes and waterbodies, Parks and Wildlife Department, Baltistan team conducted a digital survey of wetlands in Baltistan. Raw data for this survey was mainly acquired from European Commission's Joint Research Centre Sentinel-2 satellites of Copernicus Programme (Pekel et al., 2015); European Space Agency Climate Change Initiative - Land Cover Project (Defourny et al., 2023); and ESRI Sentinel-2 10-Meter Land Use/Land Cover dataset (Karra et al., 2021). This data was further verified for the target area, through satellite imagery available through Google, Bing and Open Street Maps. The data produced from this survey will support applications including water resource management, climate modelling, biodiversity conservation and food security.



As a result of this study more than 550 permanent and semi-permanent water bodies in the region were digitized, to ascertain the covered area, elevation, location and accessibility. These lakes and water bodies range from 0.3 hectares to 220 hectares, it's also pertinent to mentioned that many additional temporary water bodies on glaciers and glacial moraine where not included in this study. Though such water bodies may be ecological important and are potential hazards, but their short-term nature makes acquisition of real-time data quite impossible. The table on next page provides a complete list of all the cataloged lakes and wetlands in the region. Additional maps and charts are also given in this report to present the data in a more manageable way. All the digital data for the report can be accessed from the Parks and Wildlife Department, Baltistan.



Cataloged Lakes of Baltistan

No.	Lake Name ¹	District	Trunk Road Location ²	Road Distance ³ (kms)	Size ⁴ (ha)	Elevation (masl)	Tracking Distance ⁵ (kms)	Coordinates (lat, long)
1	Ameerabad1 Lake	Ghanche	Marcha	129.5	6.8	4,932	15.2	34.94897832, 76.39507398
2	Ameerabad2 Lake	Ghanche	Marcha	129.5	1.6	4,892	14.9	34.95115501, 76.39865543
3	Ameerabad3 Lake	Ghanche	Marcha	129.5	2.6	4,817	12.3	34.95838010, 76.43332402
4	Ameerabad4 Lake	Ghanche	Marcha	129.5	1.2	4,772	14.1	34.96236304, 76.40131779
5	Chaur Lake	Ghanche	Chuar	146.8	4.2	4,660	19.6	34.77823143, 76.66827723
6	Chorbat1 Lake	Ghanche	Hassanabad Chorbat	133.5	14.8	4,664	22.9	34.82771152, 76.45598079
7	Chorbat10 Lake	Ghanche	Hassanabad Chorbat	133.5	3.7	4,752	17.6	34.91417934, 76.42356329
8	Chorbat11 Lake	Ghanche	Hassanabad Chorbat	133.5	0.7	4,671	14.0	34.91081539, 76.43595610
9	Chorbat12 Lake	Ghanche	Hassanabad Chorbat	133.5	1.4	4,758	14.7	34.90593950, 76.43302681
10	Chorbat13 Lake	Ghanche	Hassanabad Chorbat	133.5	1.9	5,038	17.6	34.93110036, 76.40311130
11	Chorbat2 Lake	Ghanche	Hassanabad Chorbat	133.5	8.8	4,867	19.2	34.85275800, 76.47632659
12	Chorbat3 Lake	Ghanche	Hassanabad Chorbat	133.5	4.3	4,835	19.4	34.85830150, 76.47441347
13	Chorbat4 Lake	Ghanche	Hassanabad Chorbat	133.5	0.7	4,787	20.5	34.84362666, 76.44119122
14	Chorbat5 Lake	Ghanche	Hassanabad Chorbat	133.5	0.4	4,721	19.8	34.84828748, 76.44129229
15	Chorbat6 Lake	Ghanche	Hassanabad Chorbat	133.5	0.3	4,956	20.2	34.85235554, 76.42987767
16	Chorbat7 Lake	Ghanche	Hassanabad Chorbat	133.5	0.7	4,990	19.5	34.87221816, 76.41946250
17	Chorbat8 Lake	Ghanche	Hassanabad Chorbat	133.5	1.2	4,911	18.6	34.88006083, 76.42873521
18	Chorbat9 Lake	Ghanche	Hassanabad Chorbat	133.5	5.5	4,714	14.7	34.92287282, 76.42569109
19	ChorbatAmeerabad1 Lake	Ghanche	Marcha	129.5	5.0	4,818	13.9	34.98444778, 76.39174345
20	ChorbatAmeerabad2 Lake	Ghanche	Marcha	129.5	3.5	4,944	14.8	34.98712753, 76.38448262
21	ChorbatAmeerabad3 Lake	Ghanche	Marcha	129.5	3.2	4,949	37.0	34.98430248, 76.38142764
22	ChorbatAmeerabad4 Lake	Ghanche	Marcha	129.5	2.1	4,751	13.2	34.97963660, 76.39960343
23	ChorbatAmeerabad5 Lake	Ghanche	Marcha	129.5	1.9	4,898	14.5	34.97557852, 76.38938026
24	Farano Lake	Ghanche	Frano	149.6	0.4	5,160	12.6	35.02862089, 76.72608064
25	Farano1 Lake	Ghanche	Frano	149.6	1.3	4,943	23.9	35.05510379, 76.75865300

No.	Lake Name ¹	District	Trunk Road Location ²	Road Distance ³ (kms)	Size ⁴ (ha)	Elevation (masl)	Tracking Distance ⁵ (kms)	Coordinates (lat, long)
26	Ganhtra Tso Lake	Ghanche	Gulshan-e-Kabir	136.7	1.4	4,620	16.5	35.10463675, 76.61053988
27	Gorshi Lake	Ghanche	Lunkha	115.3	6.9	4,685	14.1	35.01901658, 76.37091562
28	GorshiComp1 Lake	Ghanche	Lunkha	115.3	2.4	4,852	15.9	35.02430646, 76.35610730
29	GorshiComp2 Lake	Ghanche	Lunkha	115.3	1.0	4,755	15.2	35.02437058, 76.36334069
30	GorshiComp3 Lake	Ghanche	Lunkha	115.3	1.9	5,124	16.2	35.00594525, 76.37137302
31	GorshiComp4 Lake	Ghanche	Lunkha	115.3	1.8	5,023	16.1	35.00191820, 76.37572522
32	GorshiComp5 Lake	Ghanche	Lunkha	115.3	0.4	4,826	14.7	35.00684733, 76.38813338
33	Gulshan-e-Kabeer Glacial Lake	Ghanche	Gulshan-e-Kabir	136.7	2.3	4,965	23.5	35.08446066, 76.64292449
34	Gulshan-e-Kabeer Lake	Ghanche	Gulshan-e-Kabir	136.7	2.7	4,595	21.4	35.09823704, 76.65222433
35	Haldi Lake	Ghanche	Haldi	162.5	2.2	4,551	7.9	35.08599353, 76.73234963
36	Harangus Lake	Ghanche	Thally	89.4	2.9	4,897	9.1	35.37867193, 76.18560245
37	Hiusming Lake	Ghanche	Hiusming	96.4	4.8	4,640	5.4	35.35594604, 76.07435833
38	Hushe Lake	Ghanche	Hushe	133.4	1.9	4,125	15.1	35.55821958, 76.32049660
39	Keris1 Lake	Ghanche	Keris	45.5	3.4	5,099	15.0	35.30321732, 76.05135288
40	Keris2 Lake	Ghanche	Keris	45.5	0.4	5,016	15.9	35.31085640, 76.05596748
41	Khand Lake	Ghanche	Khand	122.3	1.3	4,749	8.3	35.34292204, 76.30225381
42	Khaplu Lake	Ghanche	Khaplu	94.6	11.6	4,622	12.8	35.07418397, 76.29301380
43	KhapluBroq1 Lake	Ghanche	Youchung	101.4	8.1	4,788	13.2	35.06443187, 76.37746206
44	KhapluBroq2 Lake	Ghanche	Youchung	101.4	2.5	4,687	12.0	35.07310935, 76.38110604
45	KhapluCom1 Lake	Ghanche	Khaplu	94.6	5.4	4,725	14.3	35.05966613, 76.31196538
46	KhapluCom2 Lake	Ghanche	Khaplu	94.6	5.1	4,840	15.1	35.05296637, 76.31472230
47	KhapluCom3 Lake	Ghanche	Khaplu	94.6	6.6	4,799	10.8	35.09409856, 76.28405954
48	KhapluCom4 Lake	Ghanche	Khaplu	94.6	0.9	4,621	9.6	35.10306099, 76.29101560
49	Kharfaq Lake	Ghanche	Kharfaq	71.5	31.3	3,335	7.1	35.17100759, 76.20568430
50	Kharfaq1 Glacial Lake	Ghanche	Kharfaq	71.5	4.9	4,610	17.4	35.09655973, 76.20006409

No.	Lake Name ¹	District	Trunk Road Location ²	Road Distance ³ (kms)	Size ⁴ (ha)	Elevation (masl)	Tracking Distance ⁵ (kms)	Coordinates (lat, long)
51	Kharfaq2 Glacial Lake	Ghanche	Kharfaq	71.5	1.1	4,744	18.6	35.08622252, 76.19723026
52	Khenpi Lake	Ghanche	Barah	85.1	20.5	4,557	15.9	35.09375029, 76.25137755
53	Klutser1 Lake	Ghanche	Youchung	101.4	5.7	4,862	12.6	35.08488038, 76.35635789
54	Klutser2 Lake	Ghanche	Youchung	101.4	3.6	4,938	13.2	35.08424545, 76.34934891
55	Marcha Lake	Ghanche	Marcha	129.5	1.9	5,015	13.9	35.07123675, 76.60371235
56	Mongur Tso Lake	Ghanche	Gulshan-e-Kabir	136.7	0.4	4,289	16.5	35.13049499, 76.63712117
57	Partook Lake	Ghanche	Partook	140.7	2.2	4,968	12.6	35.00709918, 76.66911119
58	Pusulehu1 Lake	Ghanche	Keris	45.5	1.9	4,746	15.1	35.33688203, 76.02767728
59	Pusulehu2 Lake	Ghanche	Keris	45.5	1.1	4,874	14.3	35.32077880, 76.02814497
60	Pusulehu3 Lake	Ghanche	Keris	45.5	0.3	4,922	15.1	35.32322566, 76.03358961
61	Pusulehu4 Lake	Ghanche	Keris	45.5	1.4	4,971	16.3	35.33760787, 76.03820157
62	Rimbo Tso Lake	Ghanche	Gulshan-e-Kabir	136.7	2.2	4,503	19.5	35.11067495, 76.65114762
63	Siksa1 Lake	Ghanche	Partook	140.7	1.6	5,110	28.1	34.75613738, 76.58877665
64	Siksa10 Lake	Ghanche	Partook	140.7	14.6	4,791	20.3	34.81341992, 76.51732512
65	Siksa11 Lake	Ghanche	Partook	140.7	12.4	4,782	20.5	34.81059197, 76.50227494
66	Siksa12 Lake	Ghanche	Partook	140.7	2.2	4,959	20.9	34.81400034, 76.49505439
67	Siksa13 Lake	Ghanche	Partook	140.7	0.9	4,744	19.4	34.81813064, 76.51247748
68	Siksa14 Lake	Ghanche	Partook	140.7	2.9	4,923	16.4	34.85073363, 76.51133517
69	Siksa15 Lake	Ghanche	Partook	140.7	5.4	4,919	15.8	34.86610814, 76.50070765
70	Siksa16 Lake	Ghanche	Partook	140.7	1.3	4,881	14.9	34.87156169, 76.50455349
71	Siksa2 Lake	Ghanche	Partook	140.7	1.7	5,012	25.9	34.76781449, 76.58588285
72	Siksa3 Lake	Ghanche	Partook	140.7	1.3	4,825	25.0	34.77399647, 76.59074627
73	Siksa4 Lake	Ghanche	Partook	140.7	2.1	4,943	26.2	34.77101904, 76.57702916
74	Siksa5 Lake	Ghanche	Partook	140.7	1.5	5,137	27.9	34.76418141, 76.57181182
75	Siksa6 Lake	Ghanche	Partook	140.7	1.3	5,166	27.4	34.76460939, 76.56822906
76	Siksa7 Lake	Ghanche	Partook	140.7	1.0	5,040	27.8	34.77165435, 76.56685618

No.	Lake Name ¹	District	Trunk Road Location ²	Road Distance ³ (kms)	Size ⁴ (ha)	Elevation (masl)	Tracking Distance ⁵ (kms)	Coordinates (lat, long)
77	Siksa8 Lake	Ghanche	Partook	140.7	0.9	4,947	24.2	34.78714620, 76.53510221
78	Siksa9 Lake	Ghanche	Partook	140.7	1.4	4,997	25.3	34.78127325, 76.52952786
79	Thallay Broq Lake	Ghanche	Thallay Broq	105.9	0.4	4,492	14.1	35.45851983, 75.98240922
80	Thallay Lake	Ghanche	Thally	89.4	9.1	4,403	7.4	35.30859129, 76.09089837
81	ThallayMinor1 Lake	Ghanche	Thally	89.4	3.6	4,845	10.0	35.30560532, 76.06809550
82	ThallayMinor2 Lake	Ghanche	Thally	89.4	1.6	4,598	9.1	35.32462897, 76.08152172
83	Thang Lake	Ghanche	Frano	149.6	1.7	5,015	24.0	34.99776208, 76.91740131
84	Trannapi Lake	Ghanche	Barah	85.1	23.4	4,536	14.7	35.09598292, 76.23380339
85	TrannapiGlacia l1 Lake	Ghanche	Barah	85.1	2.0	4,633	16.5	35.08950150, 76.23004820
86	TrannapiGlacia l2 Lake	Ghanche	Barah	85.1	0.6	4,796	17.9	35.08951460, 76.21757978
87	Yugo Glacial Lake	Ghanche	Yugo	66.5	0.8	4,737	14.1	35.08870325, 76.18070626
88	BariLa1 Lake	Kharmang	Manthokha	59.3	4.2	4,843	39.6	34.92520970, 75.77764705
89	BariLa2 Lake	Kharmang	Manthokha	59.3	2.7	4,824	39.0	34.92211572, 75.77517980
90	BariLa3 Lake	Kharmang	Manthokha	59.3	9.4	4,779	37.9	34.91823836, 75.76538948
91	BariLa4 Lake	Kharmang	Manthokha	59.3	0.3	4,804	39.5	34.90767614, 75.77349814
92	Farma1 Lake	Kharmang	Farma	75.2	0.5	4,274	8.5	35.04490823, 75.75495850
93	Farma2 Lake	Kharmang	Farma	75.2	1.1	4,734	10.4	35.02716679, 75.77840240
94	Farma3 Lake	Kharmang	Farma	75.2	1.3	4,667	14.8	35.00309315, 75.72918530
95	Farma4 Lake	Kharmang	Farma	75.2	0.6	4,831	15.9	34.99394275, 75.73004707
96	Farma5 Lake	Kharmang	Farma	75.2	2.5	4,625	15.4	34.99438656, 75.75363609
97	Farma6 Lake	Kharmang	Farma	75.2	2.5	4,745	16.8	34.98437632, 75.76241835
98	Farma7 Lake	Kharmang	Farma	75.2	14.5	4,696	15.8	35.00446693, 75.76686761
99	Farma8 Lake	Kharmang	Farma	75.2	3.4	4,709	15.1	35.00073428, 75.77040197
100	Farma9 Lake	Kharmang	Farma	75.2	0.7	4,748	16.9	35.00458341, 75.77945449
101	Ganokh1 Lake	Kharmang	Olding	123.8	0.6	3,924	18.3	34.76688257, 76.34372764
102	Ganokh10 Lake	Kharmang	Olding	123.8	2.3	4,825	29.3	34.77736936, 76.43930923

No.	Lake Name ¹	District	Trunk Road Location ²	Road Distance ³ (kms)	Size ⁴ (ha)	Elevation (masl)	Tracking Distance ⁵ (kms)	Coordinates (lat, long)
103	Ganokh11 Lake	Kharmang	Olding	123.8	0.9	4,895	30.0	34.77665792, 76.44389458
104	Ganokh12 Lake	Kharmang	Olding	123.8	1.3	4,890	30.3	34.77740383, 76.44651897
105	Ganokh13 Lake	Kharmang	Olding	123.8	0.8	4,929	27.6	34.80586476, 76.38078413
106	Ganokh2 Lake	Kharmang	Olding	123.8	0.5	4,720	24.0	34.75514240, 76.39060248
107	Ganokh3 Lake	Kharmang	Olding	123.8	0.5	4,755	24.5	34.75410923, 76.39421071
108	Ganokh4 Lake	Kharmang	Olding	123.8	3.0	4,780	25.1	34.74808203, 76.39649564
109	Ganokh5 Lake	Kharmang	Olding	123.8	1.5	4,800	25.3	34.74678631, 76.39973969
110	Ganokh6 Lake	Kharmang	Olding	123.8	3.4	4,770	28.3	34.75692501, 76.41417375
111	Ganokh7 Lake	Kharmang	Olding	123.8	7.5	4,772	29.2	34.76195594, 76.42609969
112	Ganokh8 Lake	Kharmang	Olding	123.8	4.3	4,920	31.1	34.75181145, 76.43631767
113	Ganokh9 Lake	Kharmang	Olding	123.8	5.2	4,770	28.2	34.78126833, 76.42849432
114	Ghandus High1 Lake	Kharmang	Ghandus	89.5	17.1	4,900	17.6	35.05548307, 76.26126908
115	Ghandus High2 Lake	Kharmang	Ghandus	89.5	0.6	4,890	16.8	35.06439219, 76.22135412
116	Ghandus High3 Lake	Kharmang	Ghandus	89.5	4.8	4,910	18.6	35.03679374, 76.30854634
117	Ghandus High4 Lake	Kharmang	Ghandus	89.5	2.2	4,917	19.2	35.03349884, 76.31061486
118	Ghandus High5 Lake	Kharmang	Ghandus	89.5	2.5	4,917	20.4	35.02921767, 76.32275188
119	Ghandus High6 Lake	Kharmang	Ghandus	89.5	2.0	4,785	19.2	35.02110826, 76.31884125
120	Ghandus High7 Lake	Kharmang	Ghandus	89.5	1.3	4,730	19.8	35.00338895, 76.30902298
121	Ghandus High8 Lake	Kharmang	Ghandus	89.5	1.6	4,705	19.0	35.01024210, 76.30592007
122	Ghandus High9 Lake	Kharmang	Ghandus	89.5	14.9	4,760	19.5	35.01014820, 76.32037302
123	Ghandus Lake	Kharmang	Ghandus	89.5	31.7	2,880	4.4	34.98558889, 76.21085278
124	Ghavis1 Lake	Kharmang	Ghavis	110.4	8.9	4,836	13.1	34.83327399, 76.35209423
125	Ghavis10 Lake	Kharmang	Ghavis	110.4	1.8	4,754	14.7	34.81154108, 76.35185192
126	Ghavis2 Lake	Kharmang	Ghavis	110.4	1.8	4,884	13.9	34.83089860, 76.35799951
127	Ghavis3 Lake	Kharmang	Ghavis	110.4	1.2	4,637	9.3	34.83041307, 76.31004696
128	Ghavis4 Lake	Kharmang	Ghavis	110.4	1.3	4,770	10.5	34.82201666, 76.31263114

No.	Lake Name ¹	District	Trunk Road Location ²	Road Distance ³ (kms)	Size ⁴ (ha)	Elevation (masl)	Tracking Distance ⁵ (kms)	Coordinates (lat, long)
129	Ghavis5 Lake	Kharmang	Ghavis	110.4	0.5	4,922	11.5	34.81557047, 76.31497180
130	Ghavis6 Lake	Kharmang	Ghavis	110.4	1.6	4,725	12.1	34.82080779, 76.32611435
131	Ghavis7 Lake	Kharmang	Ghavis	110.4	2.7	4,727	12.8	34.81665831, 76.32845321
132	Ghavis8 Lake	Kharmang	Ghavis	110.4	2.7	4,936	13.7	34.80958662, 76.33089596
133	Ghavis9 Lake	Kharmang	Ghavis	110.4	0.6	4,885	16.0	34.80672955, 76.36030673
134	Gidiaksdo1 Lake	Kharmang	Gidiaksdo	103.8	3.5	4,647	17.5	34.85604003, 76.05252300
135	Gidiaksdo2 Lake	Kharmang	Gidiaksdo	103.8	2.5	4,723	20.4	34.84987416, 76.03926096
136	Gidiaksdo3 Lake	Kharmang	Gidiaksdo	103.8	2.0	4,724	23.8	34.85791894, 75.99792006
137	Gidiaksdo4 Lake	Kharmang	Gidiaksdo	103.8	5.2	4,700	22.2	34.88736202, 75.99097040
138	Gorgon1 Lake	Kharmang	Hargosil	136.2	4.9	4,745	13.0	34.78848507, 75.99469472
139	Gorgon2 Lake	Kharmang	Hargosil	136.2	3.2	4,801	13.0	34.79303454, 75.99726633
140	Gorgon3 Lake	Kharmang	Hargosil	136.2	4.5	4,751	13.8	34.79572526, 76.00176634
141	Gorgon4 Lake	Kharmang	Hargosil	136.2	4.5	4,644	11.0	34.78225516, 76.00936310
142	Gorgon5 Lake	Kharmang	Hargosil	136.2	4.1	4,844	13.6	34.79258216, 75.98961636
143	Gorgon6 Lake	Kharmang	Hargosil	136.2	1.4	4,827	14.1	34.79539972, 75.99183574
144	Gorgon7 Lake	Kharmang	Hargosil	136.2	0.6	4,884	14.7	34.79223689, 75.97886293
145	Gorgon8 Lake	Kharmang	Hargosil	136.2	0.3	4,881	14.3	34.79006116, 75.98059641
146	Hargosil1 Lake	Kharmang	Hargosil	136.2	2.8	4,306	7.1	34.75345359, 76.03775058
147	Hargosil10 Lake	Kharmang	Hargosil	136.2	0.3	4,880	14.7	34.75529093, 75.98271400
148	Hargosil2 Lake	Kharmang	Hargosil	136.2	2.3	4,696	11.9	34.76209931, 75.99996820
149	Hargosil3 Lake	Kharmang	Hargosil	136.2	2.7	4,849	13.3	34.76135548, 75.98962654
150	Hargosil4 Lake	Kharmang	Hargosil	136.2	0.4	4,753	12.6	34.75895418, 75.99736514
151	Hargosil5 Lake	Kharmang	Hargosil	136.2	0.5	4,692	10.5	34.73860994, 76.01462875
152	Hargosil6 Lake	Kharmang	Hargosil	136.2	3.2	4,824	13.6	34.74740518, 75.98541073
153	Hargosil7 Lake	Kharmang	Hargosil	136.2	0.3	4,779	12.8	34.74331835, 75.98799190
154	Hargosil8 Lake	Kharmang	Hargosil	136.2	0.7	4,854	14.3	34.75244704, 75.98197315

No.	Lake Name ¹	District	Trunk Road Location ²	Road Distance ³ (kms)	Size ⁴ (ha)	Elevation (masl)	Tracking Distance ⁵ (kms)	Coordinates (lat, long)
155	Hargosil9 Lake	Kharmang	Hargosil	136.2	1.2	4,908	15.1	34.75640851, 75.97869063
156	Karapchu1 Lake	Kharmang	Saigar	98.9	10.6	4,625	6.5	34.78288056, 75.82600000
157	Karkit Lake	Kharmang	Khusrunaral	121.3	0.8	4,784	30.2	34.73271812, 75.97594683
158	Khusrunaral East Lake	Kharmang	Khusrunaral	121.3	2.2	4,734	28.2	34.76009605, 75.96116943
159	Khusrunaral Lake	Kharmang	Khusrunaral	121.3	8.8	4,801	27.4	34.74078782, 75.96227298
160	Khusrunaral1 Lake	Kharmang	Khusrunaral	121.3	0.6	4,614	19.6	34.74405391, 75.84576469
161	Khusrunaral2 Lake	Kharmang	Khusrunaral	121.3	1.5	4,823	21.2	34.75687311, 75.83680107
162	Khusrunaral3 Lake	Kharmang	Khusrunaral	121.3	0.9	4,692	20.9	34.75968409, 75.84031676
163	Khusrunaral4 Lake	Kharmang	Khusrunaral	121.3	1.9	4,567	24.7	34.77242092, 75.85963021
164	Khusrunaral5 Lake	Kharmang	Khusrunaral	121.3	2.7	4,537	23.8	34.77457708, 75.86708321
165	Mathu Broq East1 Lake	Kharmang	Manthokha	59.3	4.2	4,725	27.2	34.90277924, 75.91578204
166	Mathu Broq East2 Lake	Kharmang	Manthokha	59.3	2.9	4,736	27.3	34.90196265, 75.91996464
167	Mathu Broq East3 Lake	Kharmang	Manthokha	59.3	1.7	4,621	25.8	34.91596713, 75.90486534
168	Mathu Broq East4 Lake	Kharmang	Manthokha	59.3	1.0	4,640	26.1	34.91077604, 75.91919338
169	Mathu Broq West1 Lake	Kharmang	Manthokha	59.3	1.1	4,648	24.7	34.97450530, 75.85378449
170	Mathu Broq West10 Lake	Kharmang	Manthokha	59.3	0.8	4,787	34.8	34.93920784, 75.79201987
171	Mathu Broq West11 Lake	Kharmang	Manthokha	59.3	3.9	4,719	33.7	34.94429755, 75.78524536
172	Mathu Broq West12 Lake	Kharmang	Manthokha	59.3	4.0	4,681	32.4	34.96741043, 75.77832614
173	Mathu Broq West13 Lake	Kharmang	Manthokha	59.3	0.9	4,710	33.1	34.96969708, 75.77472132
174	Mathu Broq West2 Lake	Kharmang	Manthokha	59.3	1.1	4,665	24.5	34.95109518, 75.87847733
175	Mathu Broq West3 Lake	Kharmang	Manthokha	59.3	1.9	4,755	26.0	34.94188361, 75.87863527
176	Mathu Broq West4 Lake	Kharmang	Manthokha	59.3	5.6	4,732	25.7	34.94335902, 75.87503924
177	Mathu Broq West5 Lake	Kharmang	Manthokha	59.3	3.2	4,817	35.2	34.94590965, 75.84787852
178	Mathu Broq West6 Lake	Kharmang	Manthokha	59.3	1.3	4,790	34.6	34.94671282, 75.84269203
179	Mathu Broq West7 Lake	Kharmang	Manthokha	59.3	4.7	4,765	33.6	34.94488162, 75.83473891
180	Mathu Broq West8 Lake	Kharmang	Manthokha	59.3	2.7	4,573	32.3	34.94439100, 75.82299405

No.	Lake Name ¹	District	Trunk Road Location ²	Road Distance ³ (kms)	Size ⁴ (ha)	Elevation (masl)	Tracking Distance ⁵ (kms)	Coordinates (lat, long)
181	Mathu Broq West9 Lake	Kharmang	Manthokha	59.3	1.9	4,668	34.2	34.93667298, 75.82784758
182	Puhultukish1 Lake	Kharmang	Khusrunaral	121.3	4.8	4,768	27.9	34.80591556, 75.96155996
183	Puhultukish10 Lake	Kharmang	Khusrunaral	121.3	2.1	4,910	32.1	34.83039636, 75.93851074
184	Puhultukish11 Lake	Kharmang	Khusrunaral	121.3	0.4	4,565	29.6	34.83543621, 75.92007945
185	Puhultukish12 Lake	Kharmang	Khusrunaral	121.3	0.7	4,628	30.2	34.84080096, 75.92301766
186	Puhultukish13 Lake	Kharmang	Khusrunaral	121.3	5.4	4,742	32.3	34.84342181, 75.94070753
187	Puhultukish14 Lake	Kharmang	Khusrunaral	121.3	14.0	4,816	33.1	34.85819858, 75.94263053
188	Puhultukish15 Lake	Kharmang	Khusrunaral	121.3	2.2	4,674	41.0	34.84824797, 75.88210850
189	Puhultukish16 Lake	Kharmang	Khusrunaral	121.3	5.1	4,855	43.0	34.85937519, 75.89389442
190	Puhultukish17 Lake	Kharmang	Khusrunaral	121.3	0.7	4,899	42.3	34.85988664, 75.88819997
191	Puhultukish18 Lake	Kharmang	Khusrunaral	121.3	8.1	4,636	39.6	34.85746299, 75.87226965
192	Puhultukish19 Lake	Kharmang	Khusrunaral	121.3	22.4	4,705	38.7	34.87775369, 75.87178393
193	Puhultukish2 Lake	Kharmang	Khusrunaral	121.3	4.6	4,844	28.2	34.81669873, 75.96034909
194	Puhultukish20 Lake	Kharmang	Khusrunaral	121.3	4.2	4,779	41.0	34.87737136, 75.89369541
195	Puhultukish21 Lake	Kharmang	Khusrunaral	121.3	0.5	4,714	37.7	34.84457136, 75.80840689
196	Puhultukish22 Lake	Kharmang	Khusrunaral	121.3	0.5	4,737	37.9	34.84590733, 75.80592497
197	Puhultukish23 Lake	Kharmang	Khusrunaral	121.3	1.4	4,706	37.5	34.84627592, 75.80955397
198	Puhultukish24 Lake	Kharmang	Khusrunaral	121.3	3.6	4,641	36.9	34.85069600, 75.81032403
199	Puhultukish25 Lake	Kharmang	Khusrunaral	121.3	2.1	4,893	40.8	34.88574037, 75.88576449
200	Puhultukish26 Lake	Kharmang	Khusrunaral	121.3	11.0	4,909	41.4	34.88773978, 75.89211743
201	Puhultukish27 Lake	Kharmang	Khusrunaral	121.3	2.1	4,959	42.2	34.89333204, 75.89077338
202	Puhultukish28 Lake	Kharmang	Khusrunaral	121.3	0.8	4,915	42.1	34.90288747, 75.88213247
203	Puhultukish29 Lake	Kharmang	Khusrunaral	121.3	0.4	4,869	41.2	34.91478989, 75.84233367
204	Puhultukish3 Lake	Kharmang	Khusrunaral	121.3	6.1	4,883	28.4	34.82519489, 75.94062002
205	Puhultukish30 Lake	Kharmang	Khusrunaral	121.3	0.6	4,927	43.0	34.92797316, 75.84813991
206	Puhultukish31 Lake	Kharmang	Khusrunaral	121.3	3.5	4,945	42.3	34.88160129, 75.90655645

No.	Lake Name ¹	District	Trunk Road Location ²	Road Distance ³ (kms)	Size ⁴ (ha)	Elevation (masl)	Tracking Distance ⁵ (kms)	Coordinates (lat, long)
207	Puhultukish4 Lake	Kharmang	Khusrunaral	121.3	3.4	4,663	31.7	34.79652118, 75.84846070
208	Puhultukish5 Lake	Kharmang	Khusrunaral	121.3	1.2	4,834	33.2	34.79355569, 75.83198499
209	Puhultukish6 Lake	Kharmang	Khusrunaral	121.3	3.8	4,745	31.7	34.80134869, 75.84092907
210	Puhultukish7 Lake	Kharmang	Khusrunaral	121.3	1.2	4,799	29.1	34.81463166, 75.91873855
211	Puhultukish8 Lake	Kharmang	Khusrunaral	121.3	0.4	4,823	31.2	34.82615470, 75.92926780
212	Puhultukish9 Lake	Kharmang	Khusrunaral	121.3	2.6	4,095	28.4	34.82746961, 75.86173230
213	Rambukha Lake	Kharmang	Goma Manta	101.6	1.2	5,070	13.0	35.01909503, 76.33715914
214	Rambukha1 Lake	Kharmang	Goma Manta	101.6	13.2	4,706	13.7	34.85377858, 76.38263152
215	Rambukha10 Lake	Kharmang	Goma Manta	101.6	8.3	4,835	21.7	34.81829286, 76.40926310
216	Rambukha11 Lake	Kharmang	Goma Manta	101.6	5.7	4,866	19.5	34.83834910, 76.41533736
217	Rambukha12 Lake	Kharmang	Goma Manta	101.6	0.9	4,875	18.8	34.84260081, 76.41368476
218	Rambukha2 Lake	Kharmang	Goma Manta	101.6	12.9	4,836	13.7	34.85371751, 76.36761330
219	Rambukha3 Lake	Kharmang	Goma Manta	101.6	3.0	4,754	13.4	34.85700672, 76.37412210
220	Rambukha4 Lake	Kharmang	Goma Manta	101.6	1.5	4,818	14.1	34.85265220, 76.37305454
221	Rambukha5 Lake	Kharmang	Goma Manta	101.6	2.5	4,765	12.1	34.85883803, 76.35098009
222	Rambukha6 Lake	Kharmang	Goma Manta	101.6	2.1	4,799	12.6	34.85506043, 76.35055133
223	Rambukha7 Lake	Kharmang	Goma Manta	101.6	2.3	5,009	16.6	34.83424135, 76.37311385
224	Rambukha8 Lake	Kharmang	Goma Manta	101.6	2.1	4,840	17.9	34.82895395, 76.38121185
225	Rambukha9 Lake	Kharmang	Goma Manta	101.6	0.9	4,950	18.7	34.82172205, 76.38716066
226	Staqbuchan Lake	Kharmang	Manthokha	59.3	3.5	4,695	30.1	34.87499178, 75.94731579
227	Staqbuchan1 Lake	Kharmang	Manthokha	59.3	3.7	4,894	31.3	34.87867272, 75.96238789
228	Staqbuchan2 Lake	Kharmang	Manthokha	59.3	3.2	4,735	30.4	34.87642517, 75.93155640
229	Staqbuchan3 Lake	Kharmang	Manthokha	59.3	1.0	4,823	31.1	34.87260954, 75.92717579
230	Thala Khor1 Lake	Kharmang	Farma	75.2	13.3	4,665	14.9	35.02694256, 75.72577045
231	Thala Khor2 Lake	Kharmang	Farma	75.2	1.7	4,652	12.9	35.02677788, 75.71676221
232	Thala Khor3 Lake	Kharmang	Farma	75.2	3.6	4,499	14.1	35.02962173, 75.70777606

No.	Lake Name ¹	District	Trunk Road Location ²	Road Distance ³ (kms)	Size ⁴ (ha)	Elevation (masl)	Tracking Distance ⁵ (kms)	Coordinates (lat, long)
233	Thala Khor4 Lake	Kharmang	Farma	75.2	3.2	4,620	11.5	35.04447877, 75.72489818
234	Thala Khor5 Lake	Kharmang	Farma	75.2	0.9	4,634	11.9	35.03937965, 75.72758313
235	Thala Khor6 Lake	Kharmang	Farma	75.2	0.7	4,600	9.8	35.07605298, 75.67521699
236	Tolti Broq1 Lake	Kharmang	Sundo	66.6	0.4	4,719	11.6	35.03117484, 75.84601550
237	Tolti Broq2 Lake	Kharmang	Sundo	66.6	1.1	4,681	13.2	35.02423491, 75.83280894
238	Tolti Broq3 Lake	Kharmang	Sundo	66.6	1.5	4,687	13.7	35.02231700, 75.83152290
239	Tolti Broq4 Lake	Kharmang	Sundo	66.6	2.0	4,646	15.0	35.01605059, 75.80379717
240	Tolti Kosuro Lake	Kharmang	Kusuro Tolti	83.5	9.8	4,799	9.5	34.90695853, 76.01646782
241	Tolti1 Lake	Kharmang	Kusuro Tolti	83.5	1.9	4,692	8.7	34.91399022, 76.02370594
242	Tolti2 Lake	Kharmang	Kusuro Tolti	83.5	1.7	4,710	9.1	34.91123646, 76.02613907
243	Tolti3 Lake	Kharmang	Kusuro Tolti	83.5	1.3	4,641	7.5	34.91036801, 76.04673466
244	Torghon1 Lake	Kharmang	Thorgon	119.3	1.9	4,395	7.9	34.81883825, 76.03303794
245	Torghon2 Lake	Kharmang	Thorgon	119.3	0.5	4,856	14.8	34.81210667, 75.97864291
246	Torghon3 Lake	Kharmang	Thorgon	119.3	2.2	4,868	15.1	34.81014986, 75.97715276
247	Arando Valley Lake	Shigar	Arando	100.2	1.0	4,227	19.2	35.77387805, 75.23773083
248	Biafo Glacial1 Lake	Shigar	Askole	109.5	2.6	3,673	22.0	35.77965746, 75.84680219
249	Biafo Glacial2 Lake	Shigar	Askole	109.5	3.4	3,929	28.5	35.80522669, 75.79129230
250	Biafo Glacial3 Lake	Shigar	Askole	109.5	1.2	3,945	29.5	35.80906311, 75.78488041
251	Biafo Glacial4 Lake	Shigar	Askole	109.5	1.5	4,004	31.3	35.81456675, 75.77333365
252	Biafo Glacial5 Lake	Shigar	Askole	109.5	2.7	4,031	34.3	35.82115606, 75.75177834
253	Biafo Glacial6 Lake	Shigar	Askole	109.5	5.7	4,027	36.7	35.82942085, 75.73948627
254	Biafo Glacial7 Lake	Shigar	Askole	109.5	5.9	4,044	38.9	35.83785038, 75.72931641
255	Biafo Glacial8 Lake	Shigar	Askole	109.5	3.3	4,154	42.8	35.85516732, 75.70644946
256	Biafo Glacial9 Lake	Shigar	Askole	109.5	5.4	4,148	46.9	35.88083833, 75.72530483
257	Blind Lake	Shigar	Lamsa	20.5	22.8	2,232	6.6	35.36256400, 75.70222665
258	Broad Peak Glacial Lake	Shigar	Askole	109.5	0.9	5,069	84.1	35.78274911, 76.54785760

No.	Lake Name ¹	District	Trunk Road Location ²	Road Distance ³ (kms)	Size ⁴ (ha)	Elevation (masl)	Tracking Distance ⁵ (kms)	Coordinates (lat, long)
259	Panmah Glacial Lake	Shigar	Askole	109.5	10.2	4,310	52.6	35.95382839, 76.02997109
260	Aqasimia Lake	Skardu	Kachura	26.0	0.7	2,260	0.7	35.43083284, 75.45861980
261	Baleang1 Lake	DNP	Astor-Kargil Road	113.8	1.8	4,502	6.4	34.75897957, 75.42971419
262	Baleang2 Lake	DNP	Astor-Kargil Road	113.8	2.2	4,621	9.6	34.77634355, 75.46303792
263	Baleang3 Lake	DNP	Astor-Kargil Road	113.8	11.4	4,643	10.8	34.77474281, 75.48015778
264	Bari La Main Lake	DNP	Bari La	65.9	19.5	4,602	1.0	34.89291920, 75.71249881
265	BariLa1 Lake	DNP	Bari La	65.9	14.2	4,631	4.4	34.88273530, 75.67953140
266	BariLa2 Lake	DNP	Bari La	65.9	8.5	4,611	3.5	34.88675263, 75.69638526
267	BariLa3 Lake	DNP	Bari La	65.9	4.9	4,600	1.1	34.89068770, 75.71887112
268	BariLa4 Lake	DNP	Bari La	65.9	2.5	4,563	2.5	34.89430918, 75.69278605
269	BariLa5 Lake	DNP	Bari La	65.9	1.9	4,771	5.7	34.87560948, 75.67948959
270	BariLa6 Lake	DNP	Bari La	65.9	2.7	4,691	5.6	34.88380164, 75.66784212
271	BariLa7 Lake	DNP	Bari La	65.9	6.6	4,715	5.2	34.89058755, 75.66811066
272	BariLa8 Lake	DNP	Bari La	65.9	3.6	4,757	3.6	34.90835988, 75.68485900
273	Barwahi1 Lake	DNP	Shatung Camp	41.3	3.7	4,569	37.8	34.88879859, 75.61749129
274	Barwahi2 Lake	DNP	Shatung Camp	41.3	12.2	4,561	36.8	34.89519379, 75.61673861
275	Barwahi3 Lake	DNP	Shatung Camp	41.3	2.5	4,595	38.6	34.89740102, 75.62971010
276	Barwahi4 Lake	DNP	Shatung Camp	41.3	7.5	4,646	28.2	34.91361851, 75.61711027
277	Barwahi5 Lake	DNP	Shatung Camp	41.3	1.0	4,740	27.3	34.93127949, 75.61498452
278	Barwahi6 Lake	DNP	Shatung Camp	41.3	14.9	4,554	26.0	34.92370272, 75.59859016
279	Barwahi7 Lake	DNP	Shatung Camp	41.3	1.2	4,583	24.4	34.91645792, 75.58643171
280	Barwahi8 Lake	DNP	Shatung Camp	41.3	3.8	4,576	24.5	34.91429294, 75.58305171
281	Barwai1 Lake	DNP	Badapani Camp	48.1	1.2	4,615	20.8	35.10685585, 75.27709776
282	Barwai10 Lake	DNP	Badapani Camp	48.1	3.2	4,539	20.8	35.12354096, 75.36950836
283	Barwai11 Lake	DNP	Badapani Camp	48.1	1.1	4,481	21.5	35.12618587, 75.37503155
284	Barwai2 Lake	DNP	Badapani Camp	48.1	2.3	4,670	22.8	35.11384744, 75.27177099

No.	Lake Name ¹	District	Trunk Road Location ²	Road Distance ³ (kms)	Size ⁴ (ha)	Elevation (masl)	Tracking Distance ⁵ (kms)	Coordinates (lat, long)
285	Barwai3 Lake	DNP	Badapani Camp	48.1	6.4	4,602	24.4	35.14483327, 75.28804930
286	Barwai4 Lake	DNP	Badapani Camp	48.1	20.3	4,549	23.1	35.13221015, 75.32133226
287	Barwai5 Lake	DNP	Badapani Camp	48.1	7.7	4,677	24.2	35.14143232, 75.33132751
288	Barwai6 Lake	DNP	Badapani Camp	48.1	2.4	4,456	17.0	35.09639054, 75.33539098
289	Barwai7 Lake	DNP	Badapani Camp	48.1	0.9	4,411	16.5	35.09728187, 75.33999914
290	Barwai8 Lake	DNP	Badapani Camp	48.1	3.1	4,508	17.5	35.10474078, 75.33220368
291	Barwai9 Lake	DNP	Badapani Camp	48.1	1.2	4,468	17.6	35.11413011, 75.34204972
292	Basho Lake	Skardu	Basho Sultanabad	49.8	4.8	4,568	9.3	35.40366102, 75.28016998
293	Bealizot Lake	Skardu	Faranshat	112.8	2.3	4,653	11.2	34.71540430, 75.66958221
294	Botokui1 Lake	Skardu	Botokui	97.2	2.6	4,434	13.4	34.70148949, 75.25933913
295	Botokui2 Lake	Skardu	Botokui	97.2	2.3	4,455	13.9	34.70080604, 75.25554283
296	Botokui3 Lake	Skardu	Botokui	97.2	1.9	4,354	15.4	34.69335962, 75.26368102
297	Botokui4 Lake	Skardu	Botokui	97.2	1.6	4,429	15.9	34.69410417, 75.25841117
298	Buniyal1 Lake	Skardu	Kunar	131.1	3.5	4,643	14.9	34.52567622, 75.71649778
299	Buniyal2 Lake	Skardu	Kunar	131.1	1.6	4,547	13.8	34.53391227, 75.72111154
300	Burjila Main Lake	DNP	Deosai Entry Point	31.0	12.3	4,576	15.5	35.17137395, 75.52084896
301	Burjila1 Lake	DNP	Deosai Entry Point	31.0	3.7	4,571	12.9	35.17170190, 75.50702478
302	Burzil Top Lake	DNP	Sheosar Lake	67.7	15.5	4,239	15.8	34.91938671, 75.18851441
303	Chapan1 Lake	Skardu	Sadpara	15.9	1.2	4,540	6.2	35.13876160, 75.64951267
304	Chapan2 Lake	Skardu	Sadpara	15.9	4.4	4,376	5.8	35.13176696, 75.63165339
305	Chapan3 Lake	Skardu	Sadpara	15.9	6.4	4,474	6.7	35.12553077, 75.62932204
306	Chapan4 Lake	Skardu	Sadpara	15.9	3.3	4,517	7.6	35.11944399, 75.63101710
307	Chogochu1 Lake	DNP	Badapani Camp	48.1	5.3	4,545	22.9	35.10203108, 75.23284272
308	Chogochu2 Lake	DNP	Badapani Camp	48.1	1.3	4,608	23.8	35.10455927, 75.22472844
309	Chogochu3 Lake	DNP	Badapani Camp	48.1	15.3	4,606	25.1	35.11892874, 75.22804971
310	Chogochu4 Lake	DNP	Badapani Camp	48.1	1.1	4,666	27.1	35.12796668, 75.26135201

No.	Lake Name ¹	District	Trunk Road Location ²	Road Distance ³ (kms)	Size ⁴ (ha)	Elevation (masl)	Tracking Distance ⁵ (kms)	Coordinates (lat, long)
311	Chogochu5 Lake	DNP	Badapani Camp	48.1	0.3	4,606	25.2	35.11928058, 75.25845630
312	Chogochu6 Lake	DNP	Badapani Camp	48.1	1.4	4,603	26.3	35.13120796, 75.25654025
313	Chogochu7 Lake	DNP	Badapani Camp	48.1	2.2	4,551	26.4	35.13811618, 75.25091500
314	Chogochu8 Lake	DNP	Badapani Camp	48.1	11.3	4,684	28.0	35.14307684, 75.26116840
315	Chutabar1 Lake	Skardu	Thorchain	90.6	7.4	4,056	17.4	35.40712929, 75.12068231
316	Chutabar2 Lake	Skardu	Thorchain	90.6	1.3	4,751	18.1	35.40858434, 75.09470648
317	Chutabar3 Lake	Skardu	Thorchain	90.6	0.4	4,358	21.9	35.37487636, 75.14158006
318	Chutabar4 Lake	Skardu	Thorchain	90.6	0.8	4,356	21.9	35.37357606, 75.13981781
319	Chutabar5 Lake	Skardu	Thorchain	90.6	0.9	4,800	23.8	35.36575613, 75.13058077
320	Dari Lake	Skardu	Shigarhang	51.1	2.1	3,916	14.2	35.25929277, 75.42710282
321	Dari2 Lake	Skardu	Shigarhang	51.1	0.3	4,660	17.2	35.24470643, 75.38255460
322	DariLa1 Lake	DNP	Shatung Camp	41.3	3.7	4,477	16.2	35.16026554, 75.47132759
323	DariLa2 Lake	DNP	Shatung Camp	41.3	4.4	4,470	16.9	35.16392434, 75.47110522
324	DariLa3 Lake	DNP	Shatung Camp	41.3	2.4	4,584	20.4	35.18780678, 75.45278640
325	DariLa4 Lake	DNP	Shatung Camp	41.3	1.7	4,572	19.3	35.18319727, 75.41622301
326	DariLa5 Lake	DNP	Shatung Camp	41.3	1.9	4,631	22.5	35.19812917, 75.41828016
327	DariLaMain Lake	DNP	Shatung Camp	41.3	14.5	4,554	18.6	35.18196481, 75.42248556
328	Deosai1 Lake	DNP	Shatung Camp	41.3	18.5	4,281	14.0	34.98658601, 75.55355384
329	Deosai10 Lake	DNP	Badapani Camp	48.1	1.0	4,575	21.3	34.91006236, 75.53452868
330	Deosai11 Lake	DNP	Badapani Camp	48.1	3.8	4,377	18.4	34.92265460, 75.51826045
331	Deosai2 Lake	DNP	Badapani Camp	48.1	14.4	4,424	20.6	34.96470907, 75.54517951
332	Deosai3 Lake	DNP	Badapani Camp	48.1	1.6	4,371	19.2	34.96854191, 75.53247346
333	Deosai4 Lake	DNP	Badapani Camp	48.1	5.6	4,286	17.5	34.96983446, 75.51691977
334	Deosai5 Lake	DNP	Badapani Camp	48.1	6.2	4,401	19.5	34.96161539, 75.53202595
335	Deosai6 Lake	DNP	Badapani Camp	48.1	7.5	4,452	21.7	34.93513727, 75.54504038
336	Deosai7 Lake	DNP	Badapani Camp	48.1	1.8	4,475	22.0	34.93143534, 75.54468519

No.	Lake Name ¹	District	Trunk Road Location ²	Road Distance ³ (kms)	Size ⁴ (ha)	Elevation (masl)	Tracking Distance ⁵ (kms)	Coordinates (lat, long)
337	Deosai8 Lake	DNP	Badapani Camp	48.1	1.6	4,508	22.7	34.92780709, 75.54942053
338	Deosai9 Lake	DNP	Shatung Camp	41.3	8.3	4,517	27.2	34.91622931, 75.55120144
339	DeosaiEast1 Lake	DNP	Shatung Camp	41.3	24.6	4,570	20.9	34.94645857, 75.59172241
340	DeosaiEast10 Lake	DNP	Bari La	52.1	0.8	4,580	12.7	34.90296615, 75.65099766
341	DeosaiEast11 Lake	DNP	Bari La	52.1	1.2	4,597	13.2	34.89859830, 75.65132213
342	DeosaiEast2 Lake	DNP	Shatung Camp	41.3	0.7	4,608	21.9	34.94919107, 75.60065832
343	DeosaiEast3 Lake	DNP	Shatung Camp	41.3	0.7	4,630	22.5	34.95007292, 75.60555908
344	DeosaiEast4 Lake	DNP	Shatung Camp	41.3	1.7	4,536	21.6	34.96215728, 75.60609599
345	DeosaiEast5 Lake	DNP	Bari La	52.1	0.6	4,655	4.0	34.96510278, 75.65677500
346	DeosaiEast6 Lake	DNP	Bari La	52.1	10.0	4,664	4.4	34.96173799, 75.65203151
347	DeosaiEast7 Lake	DNP	Bari La	52.1	1.1	4,812	9.6	34.93491892, 75.63351898
348	DeosaiEast8 Lake	DNP	Bari La	52.1	3.4	4,712	11.5	34.92410220, 75.66049522
349	DeosaiEast9 Lake	DNP	Bari La	52.1	0.9	4,709	11.0	34.92339837, 75.65585122
350	Drenu1 Lake	Skardu	Shigarthang	51.1	3.7	4,795	25.9	35.20717003, 75.36880755
351	Drenu2 Lake	Skardu	Shigarthang	51.1	4.2	4,744	27.2	35.19434760, 75.35275834
352	Drenu3 Lake	Skardu	Shigarthang	51.1	5.0	4,608	27.6	35.17749649, 75.35347360
353	Drenu4 Lake	Skardu	Shigarthang	51.1	2.8	4,671	28.7	35.18491822, 75.34289443
354	Drenu5 Lake	Skardu	Shigarthang	51.1	0.9	4,723	29.0	35.17868126, 75.34076728
355	Drenu6 Lake	Skardu	Shigarthang	51.1	2.1	4,866	30.5	35.18802882, 75.32859594
356	Faranshat1 Lake	Skardu	Faranshat	117.8	3.3	4,771	13.2	34.55916753, 75.70647670
357	Faranshat2 Lake	Skardu	Faranshat	117.8	3.5	4,663	12.0	34.56769415, 75.70524036
358	Ganji Lake	Skardu	Ganji	94.2	3.6	4,238	18.1	35.49207632, 74.98268348
359	Garsinge Lake	Skardu	Shigarthang	51.1	0.8	4,754	13.6	35.28610417, 75.44639865
360	Ghoro1 Lake	Skardu	Ghorg	25.4	1.0	4,293	14.5	35.35560113, 75.97189663
361	Ghoro2 Lake	Skardu	Ghorg	25.4	1.6	4,852	18.7	35.36663467, 76.00720083
362	Ghoro3 Lake	Skardu	Ghorg	25.4	4.7	4,839	18.1	35.35738173, 76.00335896

No.	Lake Name ¹	District	Trunk Road Location ²	Road Distance ³ (kms)	Size ⁴ (ha)	Elevation (masl)	Tracking Distance ⁵ (kms)	Coordinates (lat, long)
363	Goma1 Lake	Skardu	Goma	131.1	8.9	4,647	6.1	34.60691609, 75.42328096
364	Goma2 Lake	Skardu	Goma	131.1	1.7	4,645	7.5	34.59301218, 75.42100140
365	Goma3 Lake	Skardu	Goma	131.1	0.8	4,708	7.6	34.58022183, 75.45771181
366	Hurimul Lake	Skardu	Hurimal	70.4	0.5	4,349	11.2	35.73602292, 75.25600922
367	Imarsaa Lake	DNP	Deosai Road	31.0	11.7	4,390	4.1	35.09569432, 75.57919191
368	KarapchuEast1 Lake	Skardu	Deosai-Gultari Road	72.7	2.8	4,642	3.3	34.84327642, 75.77594546
369	KarapchuEast2 Lake	Skardu	Deosai-Gultari Road	72.7	3.7	4,757	5.3	34.85259250, 75.78482855
370	KarapchuEast3 Lake	Skardu	Deosai-Gultari Road	72.7	2.6	4,679	4.6	34.85843079, 75.78168771
371	KarapchuEast4 Lake	Skardu	Deosai-Gultari Road	72.7	0.7	4,672	2.9	34.87621751, 75.77562721
372	KarapchuEast5 Lake	Skardu	Deosai-Gultari Road	72.7	0.9	4,732	5.3	34.83297479, 75.78975134
373	KarapchuWest 1 Lake	Skardu	Deosai-Gultari Road	72.7	8.8	4,646	4.1	34.83983962, 75.71552838
374	KarapchuWest 2 Lake	Skardu	Deosai-Gultari Road	72.7	5.6	4,759	5.0	34.84582392, 75.70823329
375	KarapchuWest 3 Lake	Skardu	Deosai-Gultari Road	72.7	4.5	4,768	5.5	34.84517474, 75.70194424
376	KarapchuWest 4 Lake	Skardu	Bari La	65.9	17.1	4,678	4.3	34.87249955, 75.71563301
377	KarapchuWest 5 Lake	Skardu	Bari La	65.9	4.4	4,771	5.2	34.86857062, 75.70856073
378	KarapchuWest 6 Lake	Skardu	Deosai-Gultari Road	72.7	0.5	4,521	1.7	34.86439523, 75.73151558
379	Karapolensa1 Lake	DNP	Badapani Camp	48.1	24.3	4,335	30.0	34.82431793, 75.38215706
380	Karapolensa2 Lake	DNP	Badapani Camp	48.1	0.9	4,500	31.1	34.81802926, 75.37385035
381	Karapolensa3 Lake	DNP	Badapani Camp	48.1	1.6	4,407	32.1	34.83144643, 75.37500441
382	Karapolensa4 Lake	DNP	Badapani Camp	48.1	0.8	4,405	32.0	34.82830150, 75.37091855
383	Karapolensa5 Lake	DNP	Badapani Camp	48.1	2.3	4,390	31.5	34.83201094, 75.37117677
384	Karapolensa6 Lake	DNP	Badapani Camp	48.1	7.9	4,343	31.1	34.82973530, 75.36379594
385	Karapolensa7 Lake	DNP	Badapani Camp	48.1	2.4	4,340	30.5	34.83498517, 75.36301730
386	Karapolensa8 Lake	DNP	Badapani Camp	48.1	4.4	4,353	31.7	34.82499797, 75.36246540
387	Karbos1 Lake	Skardu	Saigar	96.7	6.5	4,693	30.2	34.87258050, 75.65264774
388	Karbos2 Lake	Skardu	Saigar	96.7	3.2	4,693	29.3	34.86709534, 75.65871201

No.	Lake Name ¹	District	Trunk Road Location ²	Road Distance ³ (kms)	Size ⁴ (ha)	Elevation (masl)	Tracking Distance ⁵ (kms)	Coordinates (lat, long)
389	Karbos3 Lake	Skardu	Saigar	96.7	1.2	4,625	28.4	34.86025947, 75.66195399
390	Karbos4 Lake	Skardu	Saigar	96.7	0.7	4,629	27.6	34.84116953, 75.68400973
391	Karbos5 Lake	Skardu	Saigar	96.7	2.2	4,687	29.0	34.85380813, 75.68951268
392	Karbos6 Lake	Skardu	Saigar	96.7	0.8	4,689	29.0	34.85563193, 75.68929833
393	Karbos7 Lake	Skardu	Saigar	96.7	1.7	4,670	28.9	34.85802105, 75.68704888
394	Karbos8 Lake	Skardu	Saigar	96.7	2.7	4,674	29.2	34.86077864, 75.68828813
395	Karbos9 Lake	Skardu	Saigar	96.7	2.9	4,729	29.6	34.86354407, 75.69100060
396	Karobai1 Lake	Skardu	Botokui	97.2	4.3	4,277	25.3	34.64823126, 75.22895482
397	Karobai2 Lake	Skardu	Botokui	97.2	3.3	4,294	26.2	34.64731229, 75.22164925
398	Karobai3 Lake	Skardu	Botokui	97.2	3.3	4,324	26.7	34.64428438, 75.21767164
399	Karobai4 Lake	Skardu	Botokui	97.2	1.5	4,319	25.6	34.64131031, 75.22912396
400	Kashoq Thang Lake	Skardu	Shilla	54.3	6.2	4,112	22.2	35.11376366, 75.66274538
401	KashoqThang2 Lake	Skardu	Shilla	54.3	0.8	4,564	23.0	35.10781065, 75.65678534
402	Katicho1 Lake	Skardu	Deosai Road	31.0	1.1	4,636	16.5	35.07628290, 75.64662817
403	Katicho2 Lake	Skardu	Deosai Road	31.0	2.3	4,654	16.5	35.08353725, 75.66124922
404	Katicho3 Lake	Skardu	Deosai Road	31.0	0.7	4,589	17.9	35.09491322, 75.65012148
405	Katicho4 Lake	Skardu	Deosai Road	31.0	1.1	4,474	18.4	35.09492118, 75.64237698
406	Katpana Lake	Skardu	Katpana	6.6	45.3	2,219	0.0	35.31641917, 75.57736046
407	Ketamun1 Lake	Skardu	Astor-Kargil Road	114.8	12.1	4,007	11.0	34.65140506, 75.36968867
408	Ketamun2 Lake	Skardu	Astor-Kargil Road	114.8	3.1	4,610	12.1	34.69271356, 75.37485653
409	Ketamun3 Lake	Skardu	Astor-Kargil Road	114.8	3.3	4,447	13.9	34.62004953, 75.39494908
410	Ketamun4 Lake	Skardu	Astor-Kargil Road	114.8	7.7	4,481	15.2	34.61226263, 75.40021465
411	Ketamun5 Lake	Skardu	Astor-Kargil Road	114.8	0.7	4,551	14.3	34.64444865, 75.34398768
412	Kunar1 Lake	Skardu	Kunar	131.1	6.9	4,598	12.6	34.52304764, 75.77153092
413	Kunar2 Lake	Skardu	Kunar	131.1	9.7	4,703	15.4	34.51140676, 75.74933194
414	Laipani1 Lake	DNP	Sheosar Lake	67.7	5.3	4,336	29.3	34.85491225, 75.33327182

No.	Lake Name ¹	District	Trunk Road Location ²	Road Distance ³ (kms)	Size ⁴ (ha)	Elevation (masl)	Tracking Distance ⁵ (kms)	Coordinates (lat, long)
415	Laipani2 Lake	DNP	Sheosar Lake	67.7	1.4	4,339	28.4	34.85594886, 75.32444958
416	Laipani3 Lake	DNP	Sheosar Lake	67.7	2.6	4,251	29.9	34.84477310, 75.31817596
417	Laipani4 Lake	DNP	Sheosar Lake	67.7	0.4	4,441	30.2	34.84935148, 75.33106606
418	Laipani5 Lake	DNP	Sheosar Lake	67.7	1.3	4,526	31.8	34.83426042, 75.32206808
419	Laipani6 Lake	DNP	Sheosar Lake	67.7	1.0	4,531	32.3	34.83264951, 75.31918331
420	Laipani7 Lake	DNP	Sheosar Lake	67.7	1.5	4,382	32.2	34.82121845, 75.32768809
421	Laipani8 Lake	DNP	Kalapani Camp	57.6	3.7	4,351	25.5	34.82732845, 75.35037960
422	Lamalungwai1 Lake	DNP	Badapani Camp	48.1	6.5	4,804	24.2	35.17299937, 75.33371256
423	Lamalungwai2 Lake	DNP	Badapani Camp	48.1	4.8	4,655	21.2	35.16894369, 75.37743225
424	Lamalungwai3 Lake	DNP	Badapani Camp	48.1	2.4	4,707	21.4	35.16626920, 75.38081334
425	Lamalungwai4 Lake	DNP	Badapani Camp	48.1	3.4	4,673	19.2	35.16263880, 75.39551249
426	Lamalungwai5 Lake	DNP	Badapani Camp	48.1	3.8	4,706	20.4	35.17319979, 75.39638828
427	MarpoLa Lake	Skardu	Faranshat	103.6	0.6	4,652	14.1	34.54816373, 75.65547396
428	Munder1 Lake	Skardu	Shigarthang	51.1	1.4	4,862	12.7	35.26547612, 75.28118310
429	Munder10 Lake	Skardu	Shigarthang	51.1	1.4	4,618	15.6	35.21252754, 75.33565295
430	Munder11 Lake	Skardu	Shigarthang	51.1	3.4	4,633	14.0	35.22369291, 75.34587195
431	Munder2 Lake	Skardu	Shigarthang	51.1	1.7	4,620	12.0	35.25547326, 75.29601327
432	Munder3 Lake	Skardu	Shigarthang	51.1	3.7	4,728	22.0	35.20272807, 75.24868498
433	Munder4 Lake	Skardu	Shigarthang	51.1	1.3	4,733	22.4	35.19817500, 75.24660876
434	Munder5 Lake	Skardu	Shigarthang	51.1	0.7	4,778	22.8	35.19646175, 75.24226958
435	Munder6 Lake	Skardu	Shigarthang	51.1	1.9	4,642	22.4	35.19255853, 75.25148536
436	Munder7 Lake	Skardu	Shigarthang	51.1	1.0	4,757	23.0	35.19181515, 75.24378520
437	Munder8 Lake	Skardu	Shigarthang	51.1	3.4	4,675	22.7	35.18881762, 75.24782849
438	Munder9 Lake	Skardu	Shigarthang	51.1	2.9	4,618	16.4	35.20657989, 75.33427416
439	Nagam Lake	Skardu	Saigar	96.7	4.1	4,545	21.5	34.75079855, 75.66566091
440	Nagam2 Lake	Skardu	Saigar	96.7	1.8	4,334	27.3	34.76441075, 75.64486874

No.	Lake Name ¹	District	Trunk Road Location ²	Road Distance ³ (kms)	Size ⁴ (ha)	Elevation (masl)	Tracking Distance ⁵ (kms)	Coordinates (lat, long)
441	Phara Lake	Skardu	Soq	31.9	1.6	4,580	10.1	35.35062527, 75.40250838
442	Ribo Tso Lake	Skardu	Shilla	54.3	3.8	4,566	22.5	35.12462266, 75.65515267
443	Royosar Lake	Skardu	Ganji	94.2	0.6	3,817	11.1	35.55469999, 74.97620000
444	Sadpara Lake	Skardu	Sadpara Lake	8.3	221.0	2,663	0.0	35.22876262, 75.63012974
445	SadparaWest1 Lake	Skardu	Sadpara Village	15.9	8.9	4,463	8.7	35.14737159, 75.54653504
446	SadparaWest2 Lake	Skardu	Sadpara Village	15.9	4.7	4,562	9.5	35.15292988, 75.53678228
447	SadparaWest3 Lake	Skardu	Sadpara Village	15.9	1.4	4,522	10.2	35.13858669, 75.54736752
448	SadparaWest4 Lake	Skardu	Sadpara Village	15.9	0.8	4,593	10.9	35.13969618, 75.54115729
449	SadparaWest5 Lake	Skardu	Sadpara Village	15.9	0.5	4,541	8.8	35.15922015, 75.54019319
450	SadparaWest6 Lake	Skardu	Sadpara Village	15.9	0.7	4,605	9.3	35.16315912, 75.53626669
451	SadparaWest7 Lake	Skardu	Sadpara Village	15.9	1.6	4,628	9.6	35.16324923, 75.53242427
452	SadparaWest8 Lake	Skardu	Sadpara Village	15.9	1.3	4,595	8.9	35.16563599, 75.53810106
453	Sadparra High1 Lake	Skardu	Sadpara Lake	8.3	1.5	4,637	6.7	35.21358311, 75.69273449
454	Sadparra High2 Lake	Skardu	Sadpara Lake	8.3	0.6	4,769	8.0	35.20478932, 75.69111306
455	Sarsangri Lake	DNP	Kalapani Camp	57.6	13.5	4,170	21.8	34.92190521, 75.24957337
456	SegadNar1 Lake	Skardu	Faranshat	112.8	3.8	4,620	14.8	34.72688390, 75.56428042
457	SegadNar2 Lake	Skardu	Faranshat	112.8	0.8	4,691	14.7	34.72105116, 75.56101882
458	SegadNar3 Lake	Skardu	Gultari	124.9	2.3	4,723	9.6	34.73419719, 75.52213153
459	SegadNar4 Lake	Skardu	Faranshat	112.8	0.8	4,225	20.4	34.76067504, 75.56649951
460	SegadNar5 Lake	Skardu	Faranshat	112.8	1.0	4,608	24.9	34.75570383, 75.54336515
461	SegadNar6 Lake	Skardu	Faranshat	112.8	18.0	4,704	27.8	34.80749943, 75.54399512
462	Shamoskith1 Lake	DNP	Kalapani Camp	57.6	2.8	4,296	7.3	35.01305908, 75.27966175
463	Shamoskith2 Lake	DNP	Kalapani Camp	57.6	2.1	4,152	9.3	35.04381689, 75.26670483
464	Shamoskith3 Lake	DNP	Kalapani Camp	57.6	4.6	4,484	12.8	35.04844430, 75.23787115
465	Shamoskith4 Lake	DNP	Kalapani Camp	57.6	1.7	4,559	13.4	35.04995928, 75.23131282
466	Shamoskith5 Lake	DNP	Kalapani Camp	57.6	1.4	4,528	13.6	35.05615437, 75.23899206

No.	Lake Name ¹	District	Trunk Road Location ²	Road Distance ³ (kms)	Size ⁴ (ha)	Elevation (masl)	Tracking Distance ⁵ (kms)	Coordinates (lat, long)
467	Shamoskith6 Lake	DNP	Kalapani Camp	57.6	2.4	4,432	15.5	35.06674319, 75.23154399
468	Shangrilla Lake	Skardu	Kachura	26.0	5.3	2,266	0.1	35.42660827, 75.45519086
469	Shatung1 Lake	DNP	Deosai Road	31.0	0.4	4,579	9.4	35.03902447, 75.59178866
470	Shatung2 Lake	DNP	Deosai Road	31.0	0.9	4,573	10.5	35.03687881, 75.60151538
471	Shatung3 Lake	DNP	Deosai Road	31.0	1.1	4,481	8.8	35.04853693, 75.59621346
472	Shatung4 Lake	DNP	Deosai Road	41.5	2.5	4,037	0.4	35.02325940, 75.57154896
473	ShatungLa1 Lake	DNP	Deosai Road	31.0	3.5	4,619	17.9	35.01753579, 75.67159033
474	ShatungLa2 Lake	DNP	Deosai Road	31.0	2.7	4,448	15.4	35.03471847, 75.66189438
475	ShatungLa3 Lake	DNP	Deosai Road	31.0	0.5	4,514	18.0	35.02885531, 75.68171427
476	ShatungLa4 Lake	DNP	Deosai Road	31.0	0.5	4,679	19.0	35.01233729, 75.67853296
477	ShatungLa5 Lake	DNP	Bari La	53.5	1.2	4,756	3.9	35.00927667, 75.69290391
478	ShatungLa6 Lake	DNP	Bari La	53.5	2.3	4,729	3.1	35.00399137, 75.69542733
479	ShatungLa7 Lake	DNP	Bari La	53.5	2.2	4,718	3.7	35.00532953, 75.70663440
480	ShatungLa8 Lake	DNP	Bari La	53.5	4.7	4,620	2.5	34.99654565, 75.70663142
481	ShengoShigar1 Lake	Skardu	Badapani Camp	48.1	5.6	4,559	36.4	34.81288203, 75.43691080
482	ShengoShigar10 Lake	Skardu	Badapani Camp	48.1	0.7	4,535	37.7	34.81880241, 75.56596195
483	ShengoShigar11 Lake	Skardu	Badapani Camp	48.1	0.7	4,499	43.2	34.81790083, 75.58161570
484	ShengoShigar12 Lake	Skardu	Badapani Camp	48.1	1.7	4,489	42.9	34.82021911, 75.57944207
485	ShengoShigar13 Lake	Skardu	Badapani Camp	48.1	6.0	4,471	42.6	34.82266088, 75.58345854
486	ShengoShigar14 Lake	Skardu	Badapani Camp	48.1	0.4	4,456	42.3	34.82475520, 75.58042699
487	ShengoShigar15 Lake	Skardu	Badapani Camp	48.1	1.2	4,519	40.2	34.82982569, 75.57449859
488	ShengoShigar16 Lake	Skardu	Badapani Camp	48.1	2.1	4,392	45.8	34.82571637, 75.59845795
489	ShengoShigar2 Lake	Skardu	Badapani Camp	48.1	0.7	4,549	38.0	34.79236294, 75.43616810
490	ShengoShigar3 Lake	Skardu	Badapani Camp	48.1	6.2	4,527	38.8	34.77854803, 75.49250763
491	ShengoShigar4 Lake	Skardu	Gultari	124.9	1.0	4,670	10.2	34.74138526, 75.50386489
492	ShengoShigar5 Lake	Skardu	Badapani Camp	48.1	1.1	4,523	41.5	34.75793585, 75.50321460

No.	Lake Name ¹	District	Trunk Road Location ²	Road Distance ³ (kms)	Size ⁴ (ha)	Elevation (masl)	Tracking Distance ⁵ (kms)	Coordinates (lat, long)
493	ShengoShigar6 Lake	Skardu	Badapani Camp	48.1	7.1	4,671	39.6	34.79067247, 75.51301370
494	ShengoShigar7 Lake	Skardu	Badapani Camp	48.1	1.3	4,608	34.1	34.81291533, 75.50038892
495	ShengoShigar8 Lake	Skardu	Badapani Camp	48.1	1.0	4,662	34.6	34.81747115, 75.53555827
496	ShengoShigar9 Lake	Skardu	Badapani Camp	48.1	0.4	4,566	38.0	34.81390893, 75.56002324
497	Sheosar Lake	DNP	Sheosar Lake	67.7	133.0	4,155	0.0	34.99091663, 75.23650106
498	Shigarthang1 Lake	Skardu	Shigarthang	51.1	0.9	4,644	17.7	35.34533855, 75.19665673
499	Shigarthang10 Lake	Skardu	Shigarthang	51.1	12.3	4,575	22.7	35.23034449, 75.18235392
500	Shigarthang11 Lake	Skardu	Shigarthang	51.1	0.5	4,547	23.1	35.22659173, 75.18592994
501	Shigarthang12 Lake	Skardu	Shigarthang	51.1	1.0	4,760	28.4	35.20368834, 75.23032827
502	Shigarthang13 Lake	Skardu	Shigarthang	51.1	5.2	4,736	25.7	35.21283599, 75.22594935
503	Shigarthang14 Lake	Skardu	Shigarthang	51.1	0.9	4,727	25.1	35.21302363, 75.22154594
504	Shigarthang15 Lake	Skardu	Shigarthang	51.1	1.1	4,701	24.8	35.21210647, 75.21801974
505	Shigarthang16 Lake	Skardu	Shigarthang	51.1	1.2	4,711	25.7	35.21942328, 75.22638020
506	Shigarthang17 Lake	Skardu	Shigarthang	51.1	2.4	4,690	25.2	35.21973958, 75.22263967
507	Shigarthang18 Lake	Skardu	Shigarthang	51.1	3.9	4,689	25.1	35.22850982, 75.21726092
508	Shigarthang19 Lake	Skardu	Shigarthang	51.1	2.3	4,664	24.7	35.22726007, 75.21320979
509	Shigarthang2 Lake	Skardu	Shigarthang	51.1	3.3	4,700	18.8	35.34293739, 75.18562418
510	Shigarthang20 Lake	Skardu	Shigarthang	51.1	0.8	4,741	20.2	35.23198436, 75.23964902
511	Shigarthang21 Lake	Skardu	Shigarthang	51.1	2.8	4,422	18.4	35.24187921, 75.25402730
512	Shigarthang3 Lake	Skardu	Shigarthang	51.1	1.8	4,755	18.1	35.32331832, 75.18305835
513	Shigarthang4 Lake	Skardu	Shigarthang	51.1	6.3	4,794	19.5	35.30010938, 75.18994298
514	Shigarthang5 Lake	Skardu	Shigarthang	51.1	4.7	4,798	17.5	35.28134826, 75.20582289
515	Shigarthang6 Lake	Skardu	Shigarthang	51.1	3.2	4,732	17.0	35.27821187, 75.20769718
516	Shigarthang7 Lake	Skardu	Shigarthang	51.1	20.2	4,586	20.3	35.26345049, 75.19397946
517	Shigarthang8 Lake	Skardu	Shigarthang	51.1	1.6	4,808	24.9	35.24878033, 75.16596312
518	Shigarthang9 Lake	Skardu	Shigarthang	51.1	4.3	4,691	22.7	35.23458341, 75.17791846

No.	Lake Name ¹	District	Trunk Road Location ²	Road Distance ³ (kms)	Size ⁴ (ha)	Elevation (masl)	Tracking Distance ⁵ (kms)	Coordinates (lat, long)
519	Shilla Lake	Skardu	Shilla	54.3	1.4	4,547	11.1	35.19201013, 75.76322416
520	Shodaro1 Lake	DNP	Badapani Camp	48.1	6.0	4,347	31.7	34.81080944, 75.40099448
521	Shodaro2 Lake	DNP	Badapani Camp	48.1	3.3	4,570	32.0	34.81093731, 75.39343045
522	Shodaro3 Lake	DNP	Badapani Camp	48.1	1.6	4,448	33.4	34.80493979, 75.41390953
523	Shodaro4 Lake	DNP	Badapani Camp	48.1	0.4	4,414	32.7	34.80502249, 75.40870151
524	Shodaro5 Lake	DNP	Badapani Camp	48.1	1.7	4,622	35.3	34.79870326, 75.42608665
525	Shodaro6 Lake	DNP	Badapani Camp	48.1	1.1	4,521	34.2	34.80666085, 75.42097709
526	Shodaro7 Lake	DNP	Badapani Camp	48.1	0.5	4,601	28.2	34.82875672, 75.43920373
527	Soq Lake	Skardu	Soq	41.4	5.2	4,565	5.5	35.36723342, 75.38361862
528	Srichan1 Lake	Skardu	Gultari	124.9	1.6	4,704	12.3	34.54714587, 75.49590949
529	Srichan2 Lake	Skardu	Gultari	124.9	6.9	4,568	13.4	34.54112668, 75.46982715
530	Srichan3 Lake	Skardu	Gultari	124.9	0.9	4,566	13.8	34.54226514, 75.46649643
531	Stakchum Lake	Skardu	Soq	41.4	1.9	4,821	7.3	35.36715321, 75.27467573
532	TaitunLa Lake	DNP	Sheosar Lake	67.7	1.6	4,192	29.8	34.86400727, 75.28189704
533	Tanpa Lake	Skardu	Tanpa	22.5	3.4	4,770	15.8	35.37122053, 75.94919303
534	Thalanka Lake	Skardu	Shagari Kalan	9.6	4.1	4,634	13.9	35.22069654, 75.47673104
535	Thyurlung Lake	Skardu	Shigarthang	51.1	1.4	4,844	21.8	35.23932674, 75.47477282
536	Tohunuwas Lake	Skardu	Khusrunaral	121.3	1.9	4,796	21.3	34.72241892, 75.94112138
537	Tormik Lake	Skardu	Hurimal	70.4	4.9	4,254	4.6	35.64527213, 75.24450867
538	Tukziwai1 Lake	DNP	Bari La	57.9	26.9	4,791	4.7	34.94664936, 75.76239587
539	Tukziwai10 Lake	DNP	Bari La	61.3	3.1	4,673	0.8	34.92943060, 75.70037964
540	Tukziwai11 Lake	DNP	Bari La	61.3	1.2	4,782	2.5	34.92211075, 75.68880813
541	Tukziwai12 Lake	DNP	Bari La	61.3	4.7	4,702	0.4	34.92108628, 75.71038764
542	Tukziwai13 Lake	DNP	Bari La	61.3	2.7	4,698	0.7	34.92272781, 75.71588780
543	Tukziwai14 Lake	DNP	Bari La	61.3	1.2	4,699	0.2	34.91870801, 75.71353151
544	Tukziwai15 Lake	DNP	Bari La	62.4	1.2	4,753	1.9	34.91425045, 75.73957336

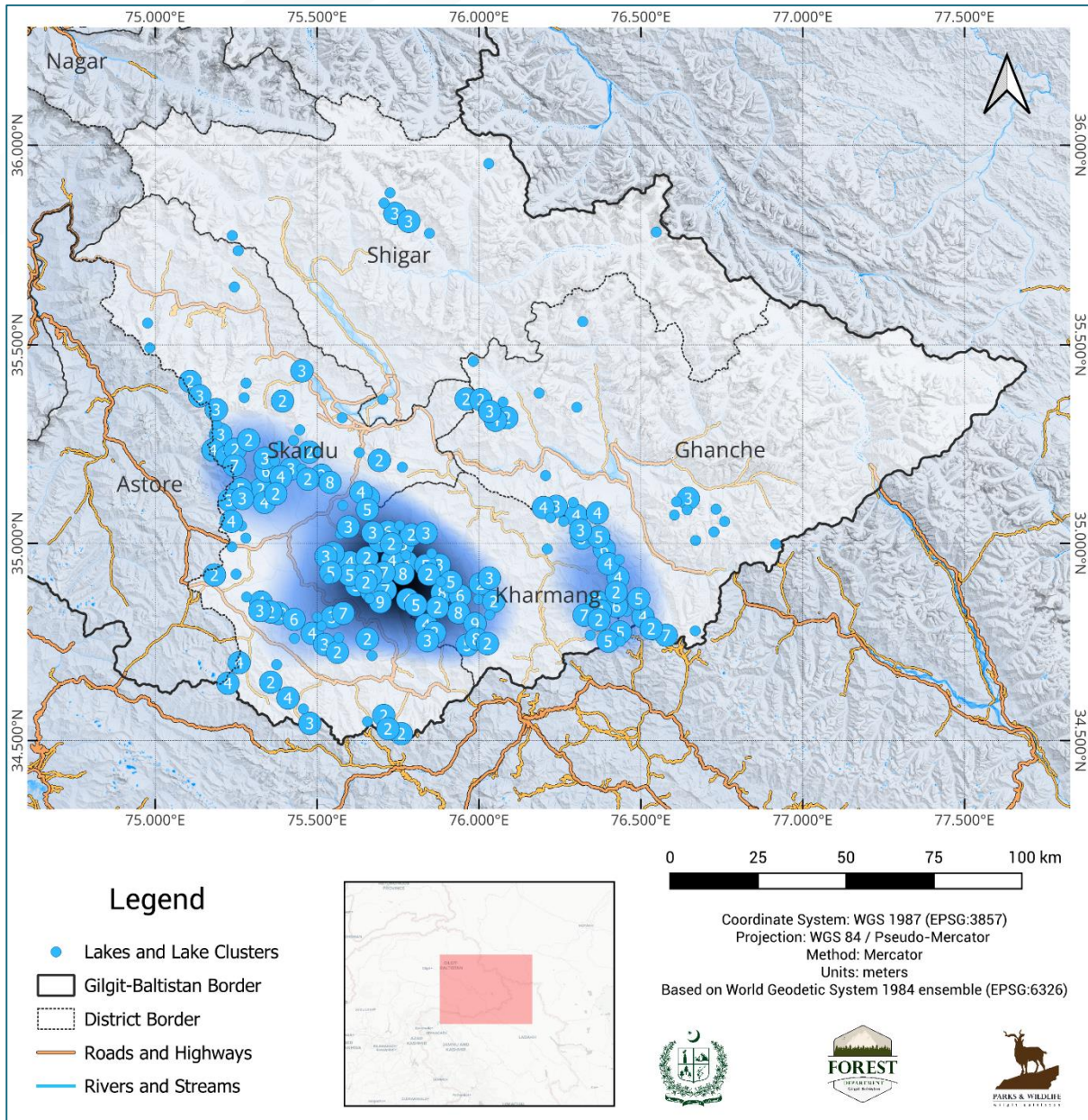
No.	Lake Name ¹	District	Trunk Road Location ²	Road Distance ³ (kms)	Size ⁴ (ha)	Elevation (masl)	Tracking Distance ⁵ (kms)	Coordinates (lat, long)
545	Tukziwai2 Lake	DNP	Bari La	57.9	5.9	4,820	2.6	34.95488514, 75.73756464
546	Tukziwai3 Lake	DNP	Bari La	57.9	6.3	4,690	1.7	34.95084745, 75.72897361
547	Tukziwai4 Lake	DNP	Bari La	57.9	2.2	4,712	0.9	34.95561459, 75.72653734
548	Tukziwai5 Lake	DNP	Bari La	57.9	5.5	4,706	2.0	34.96254265, 75.73416601
549	Tukziwai6 Lake	DNP	Bari La	57.9	0.8	4,878	6.9	34.92137982, 75.75801488
550	Tukziwai7 Lake	DNP	Bari La	57.9	0.6	4,699	4.3	34.93456459, 75.74119215
551	Tukziwai8 Lake	DNP	Bari La	61.3	9.7	4,654	0.1	34.93811762, 75.70842114
552	Tukziwai9 Lake	DNP	Bari La	61.3	1.8	4,723	0.6	34.92855112, 75.70989647
553	Upper Kachura Lake	Skardu	Kachura	28.6	21.9	2,308	0.4	35.44692133, 75.44559457
554	Yourvali Lake	DNP	Sheosar Lake	67.7	15.0	4,274	17.0	34.92032624, 75.17678161

- 1: Most of the names given in this table are not proper names of the lakes or water-bodies, in order to easily identify the lakes majority of the names are based on the main area or valley of lake's location.
- 2: The closest town, village, landmark or city to the lake with trunk road or jeep-able road access.
- 3: Road distance from Skardu city to the closest main location.
- 4: Size/area in hectares is an average annual estimate, as many of the lakes are glacier or snow fed, significant seasonal variations are normal.
- 5: This is the walking distance for the lake, from the closest town or village with road access.

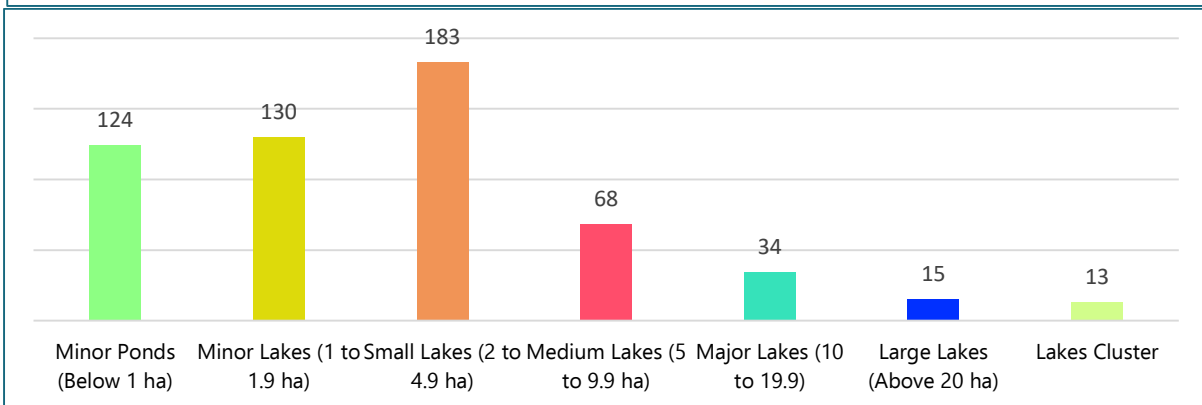
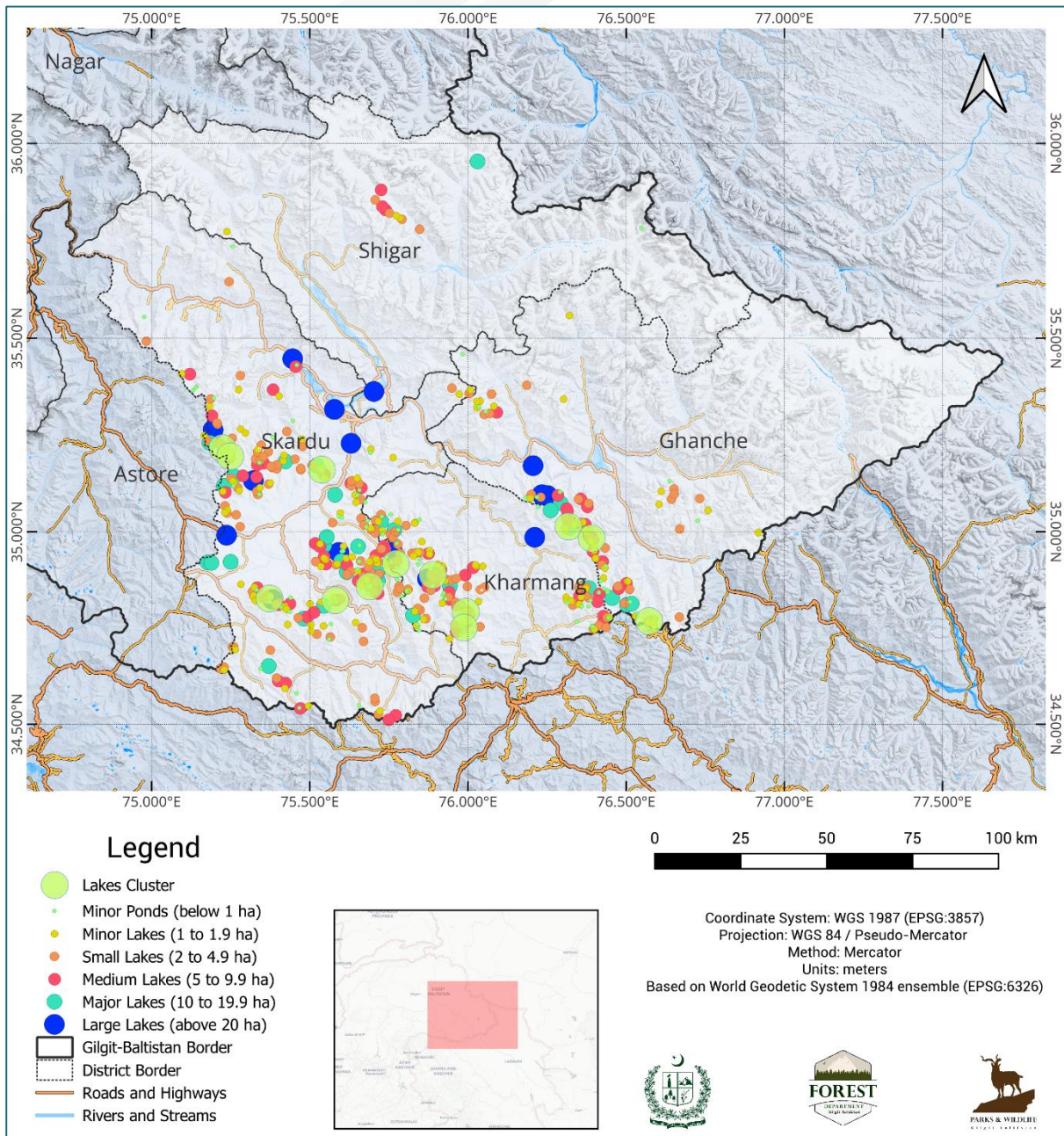


Maps and Charts

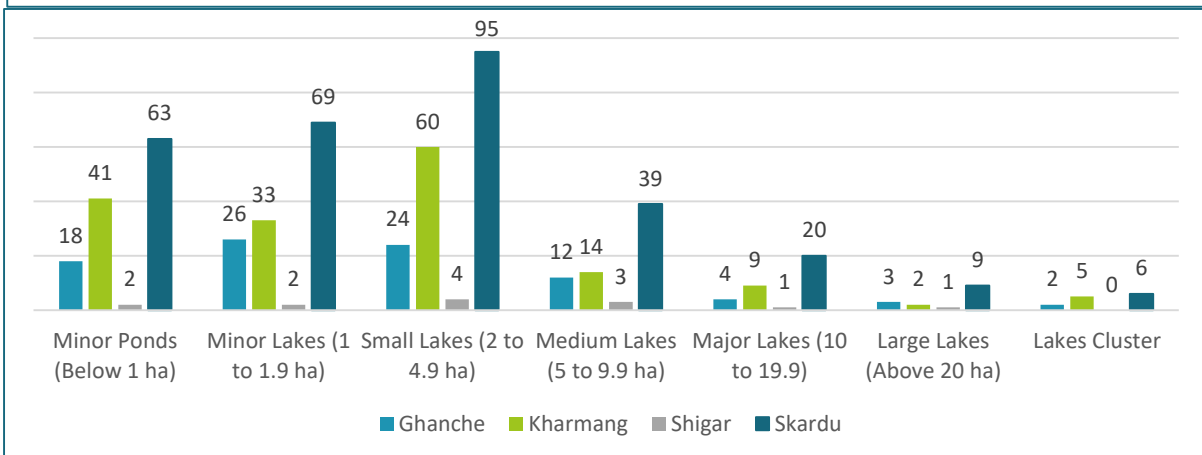
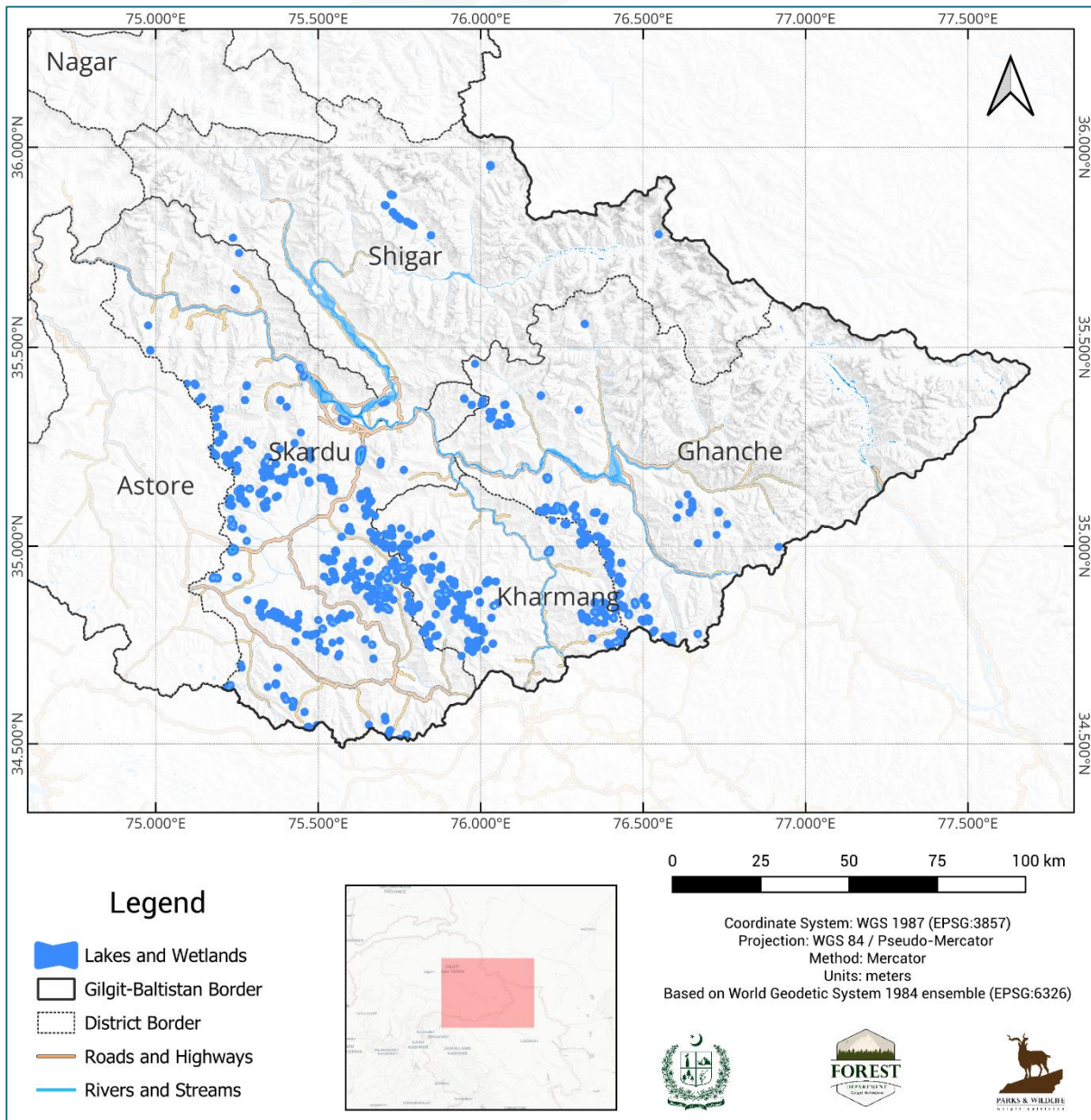
Number and Density of Lakes in Baltistan



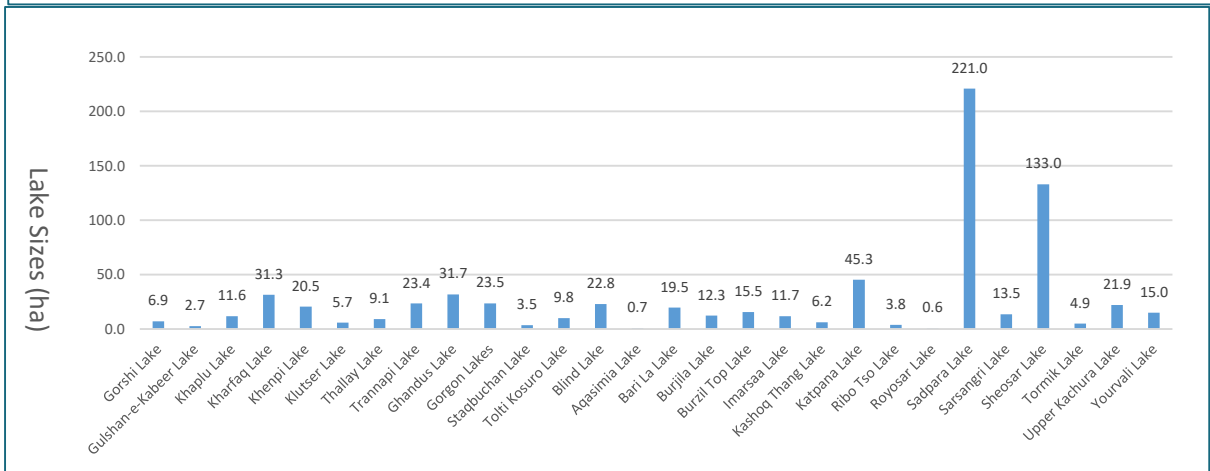
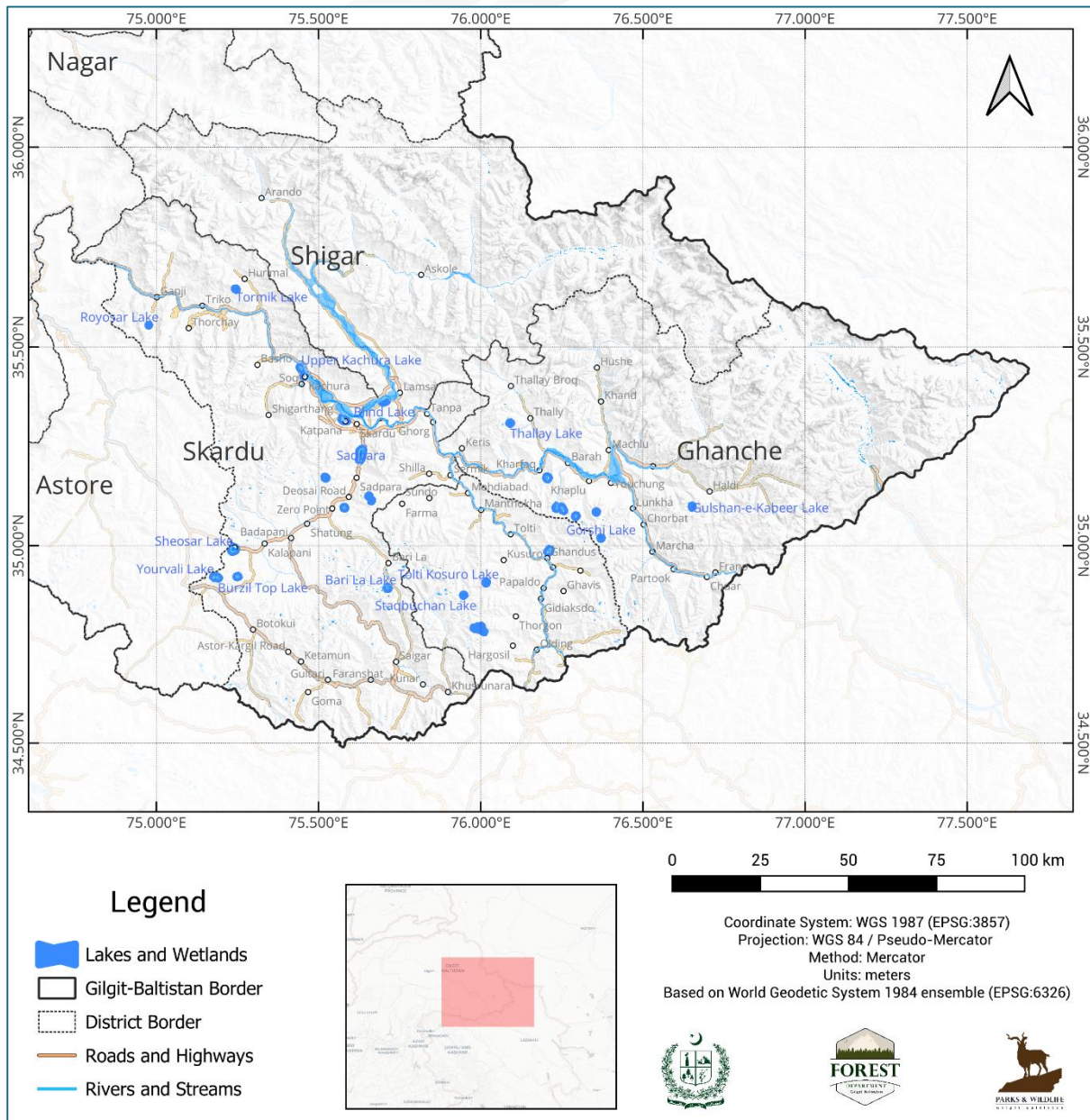
Categorized Lakes and Wetlands of Baltistan



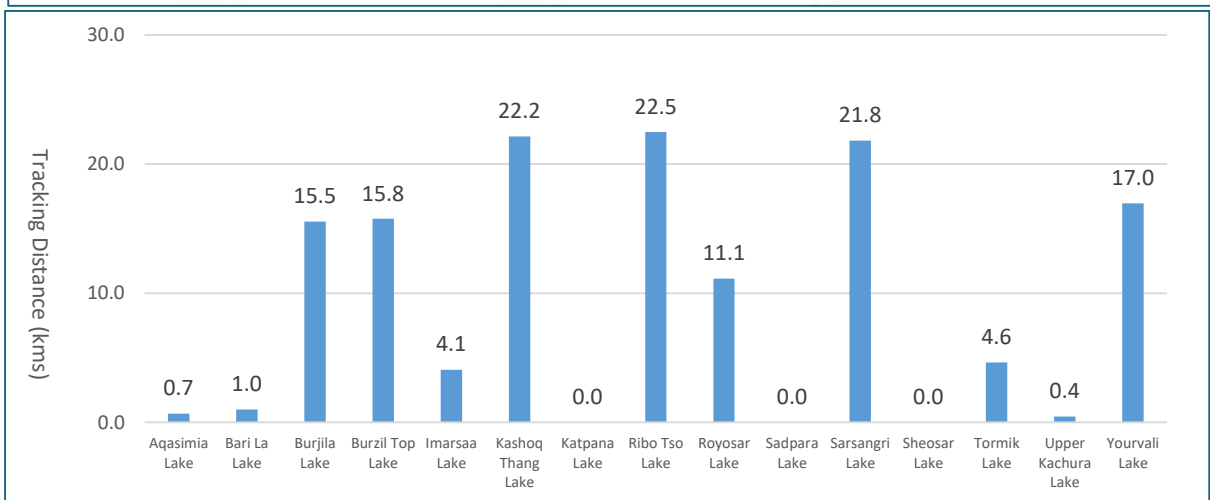
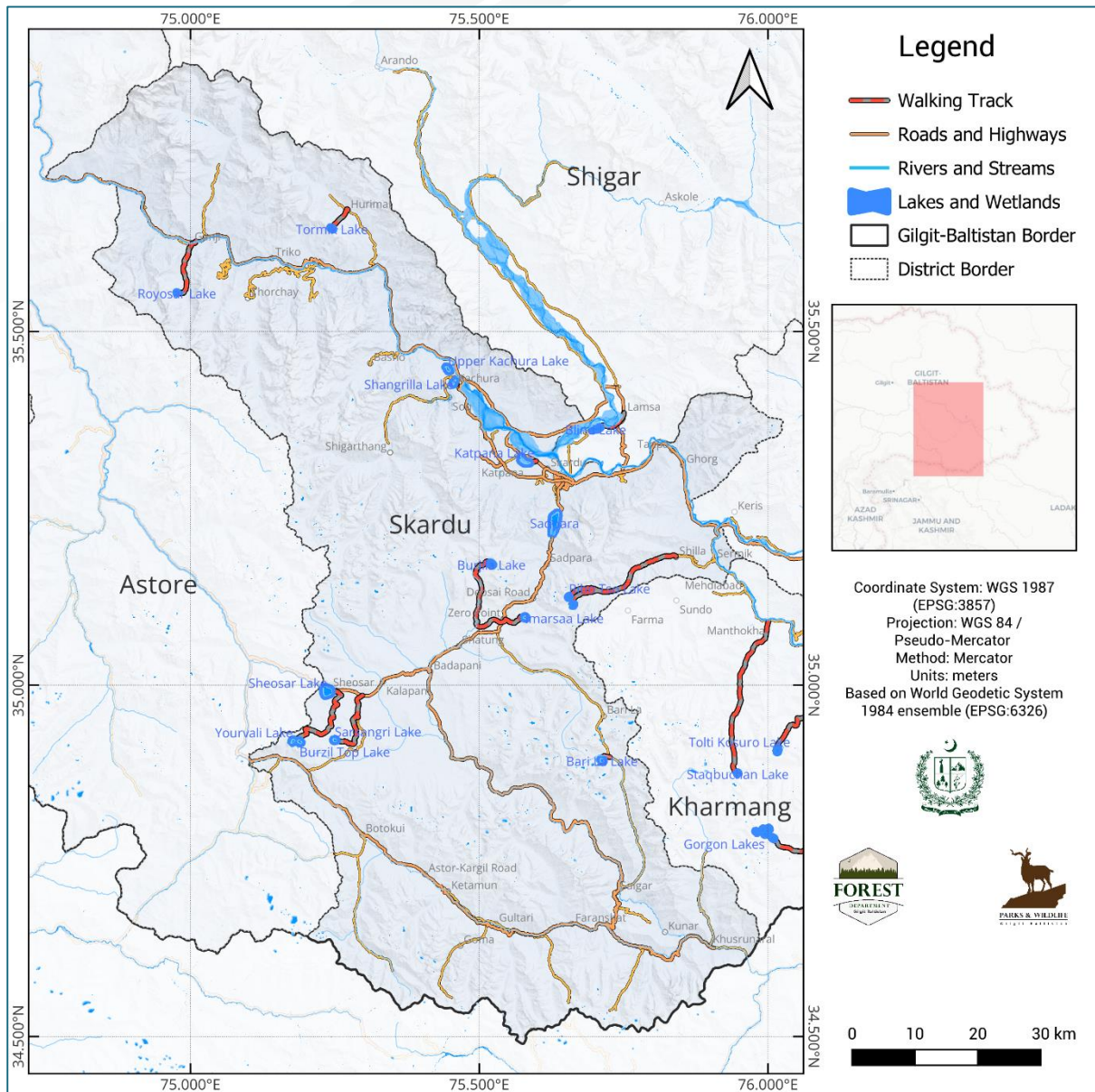
Location of Lakes and Wetlands of Baltistan



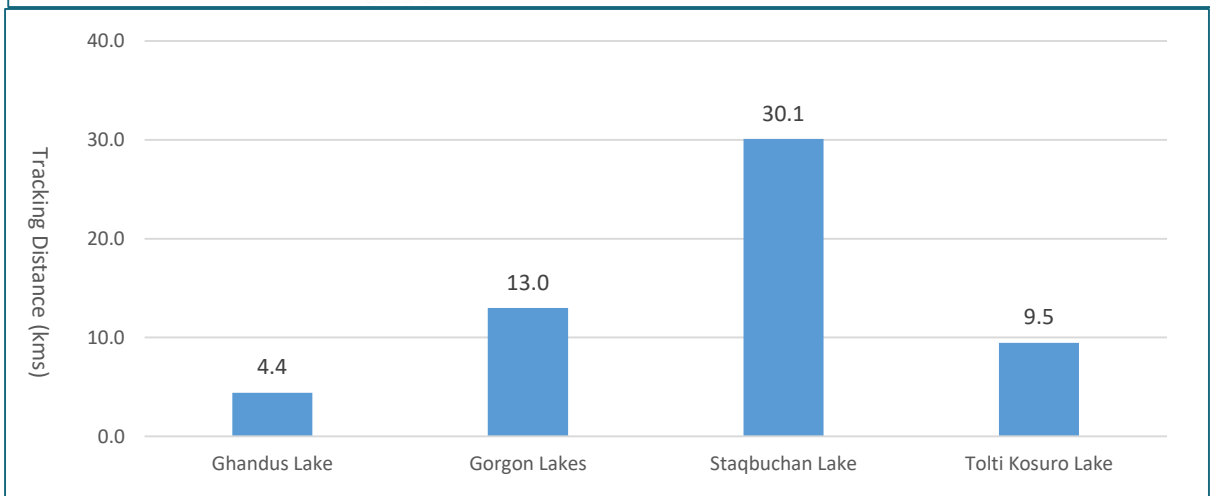
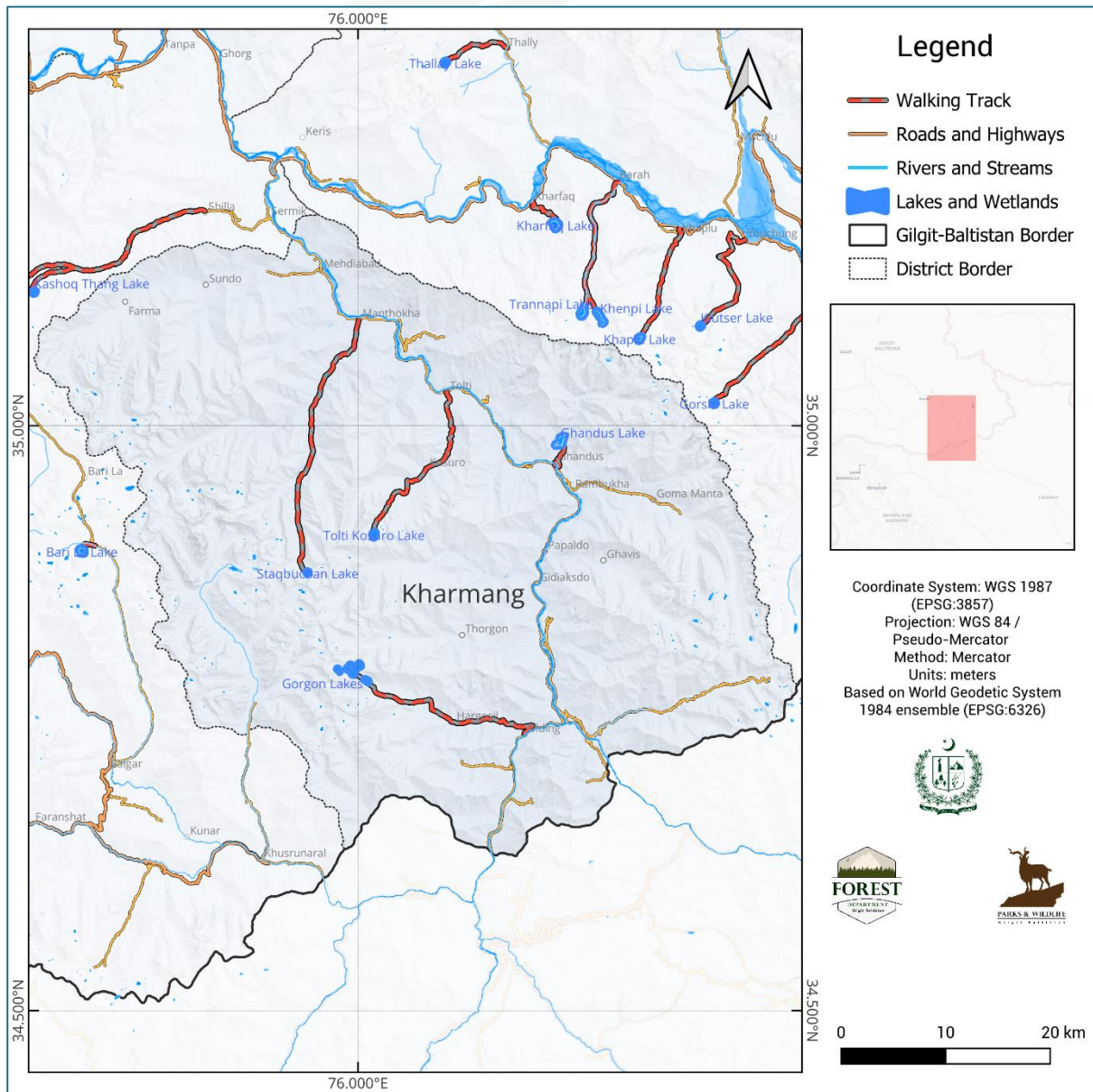
Important Lakes and Wetlands of Baltistan/DNP



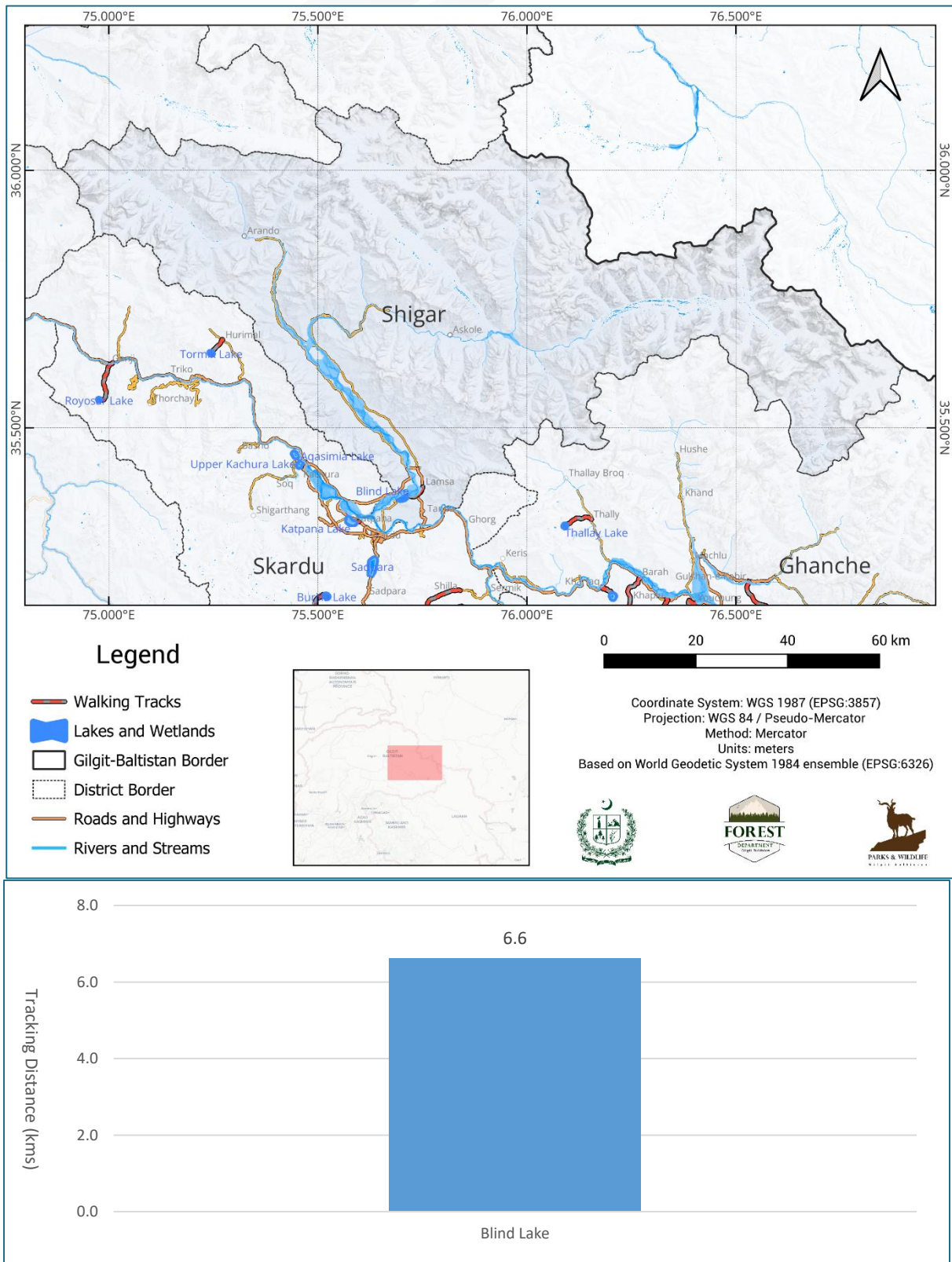
Tracks to Major Lakes of Skardu/DNP



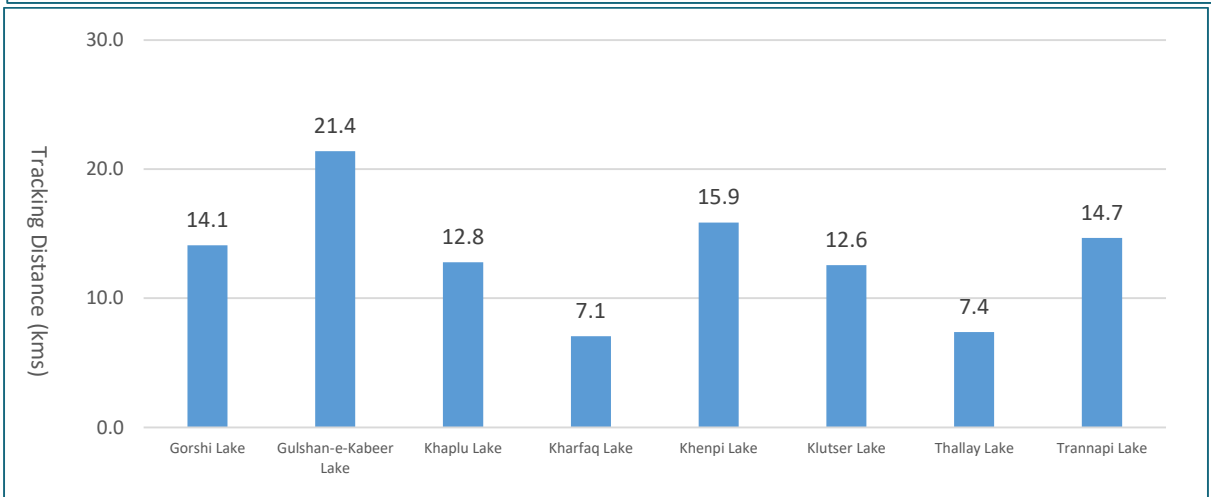
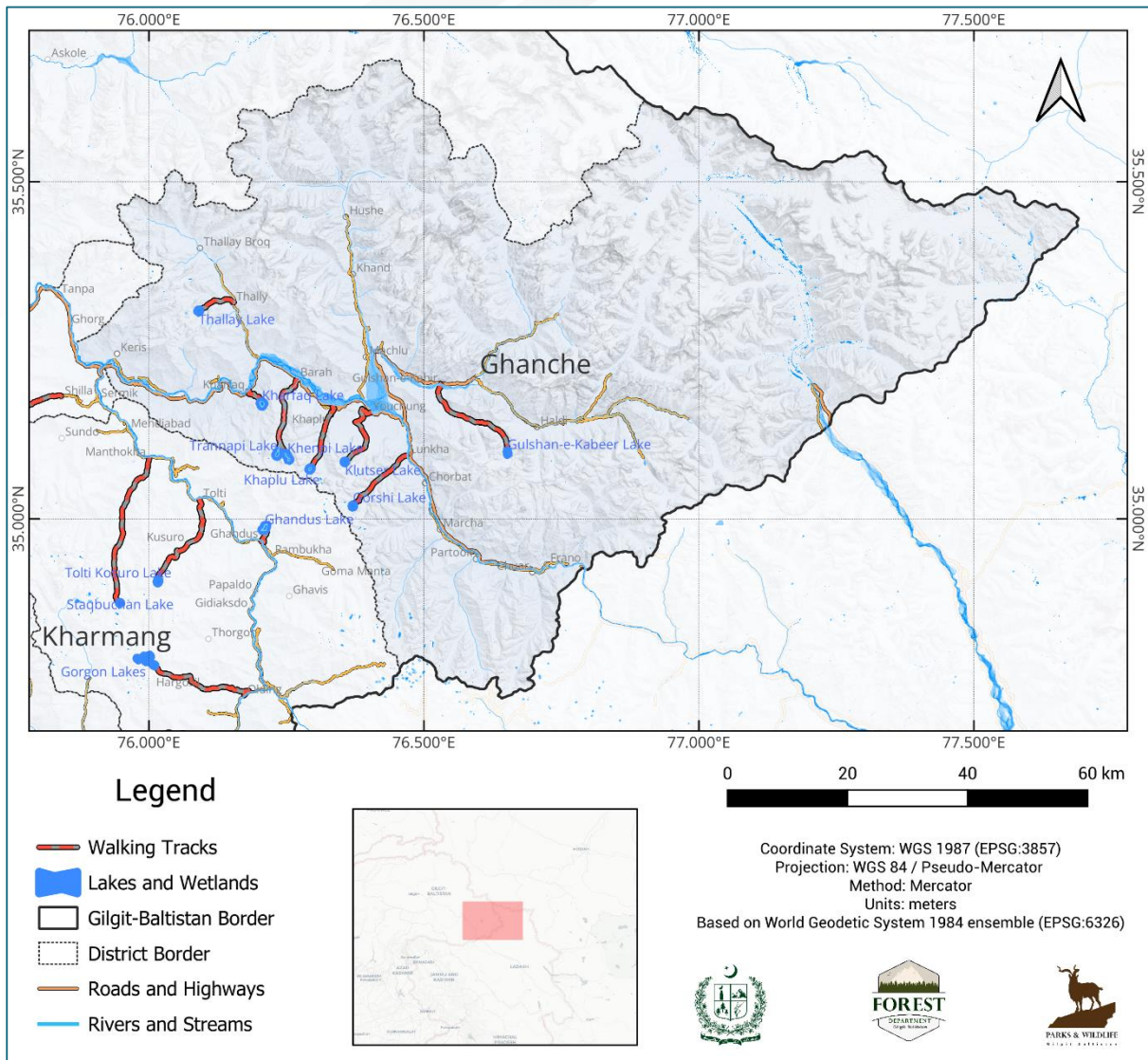
Tracks to Major Lakes of Kharmang



Tracks to Major Lakes of Shigar



Tracks to Major Lakes of Ghanche



Basic Information and Topography of Major Lakes

Gorshi Lake



District: Ghanche
Closest Landmark: Lunkha
Road Distance: 115.3 kms
Tracking Distance: 14.1 kms
Lake Size: 6.9 ha
Elevation: 4685 m
Coordinates: 35.01901658,
 76.37091562

Gulshan-e-Kabeer Lake



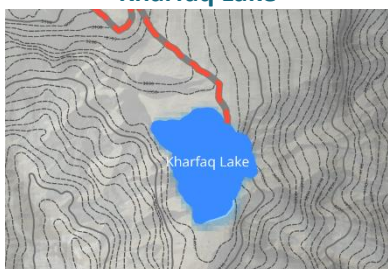
District: Ghanche
Closest Landmark: Gulshan-e-Kabir
Road Distance: 136.7 kms
Tracking Distance: 21.4 kms
Lake Size: 2.7 ha
Elevation: 4595 m
Coordinates: 35.09823704,
 76.65222433

Khaplu Lake



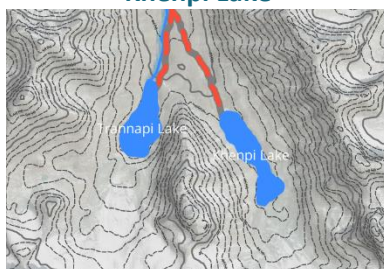
District: Ghanche
Closest Landmark: Khaplu
Road Distance: 94.6 kms
Tracking Distance: 12.8 kms
Lake Size: 11.6 ha
Elevation: 4622 m
Coordinates: 35.07418397,
 76.29301380

Kharfaq Lake



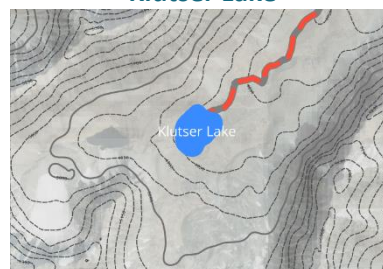
District: Ghanche
Closest Landmark: Kharfaq
Road Distance: 71.5 kms
Tracking Distance: 7.1 kms
Lake Size: 31.3 ha
Elevation: 3335 m
Coordinates: 35.17100759,
 76.20568430

Khenpi Lake



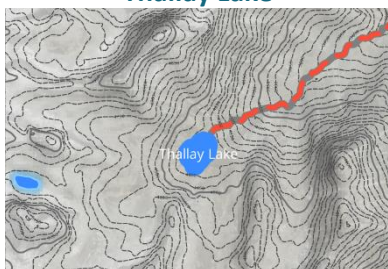
District: Ghanche
Closest Landmark: Barah
Road Distance: 85.1 kms
Tracking Distance: 15.9 kms
Lake Size: 20.5 ha
Elevation: 4557 m
Coordinates: 35.09375029,
 76.25137755

Klutser Lake



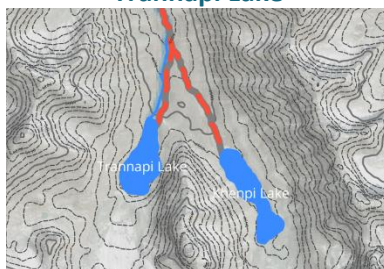
District: Ghanche
Closest Landmark: Youchung
Road Distance: 101.4 kms
Tracking Distance: 12.6 kms
Lake Size: 5.7 ha
Elevation: 4862 m
Coordinates: 35.08488038,
 76.35635789

Thallay Lake



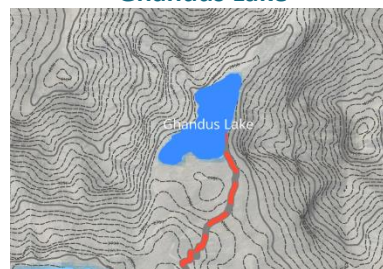
District: Ghanche
Closest Landmark: Thally
Road Distance: 89.4 kms
Tracking Distance: 7.4 kms
Lake Size: 9.1 ha
Elevation: 4403 m
Coordinates: 35.30859129,
 76.09089837

Trannapi Lake



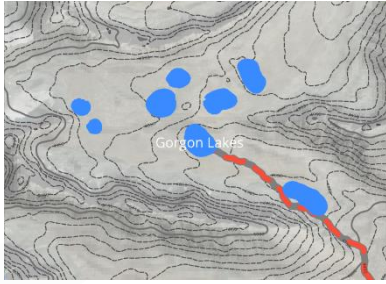
District: Ghanche
Closest Landmark: Barah
Road Distance: 85.1 kms
Tracking Distance: 14.6 kms
Lake Size: 23.4 ha
Elevation: 4536 m
Coordinates: 35.09598292,
 76.23380339

Ghandus Lake



District: Kharmang
Closest Landmark: Ghandus
Road Distance: 89.5 kms
Tracking Distance: 4.4 kms
Lake Size: 31.7 ha
Elevation: 2880 m
Coordinates: 34.98558889,
 76.21085278

Gorgon Lakes



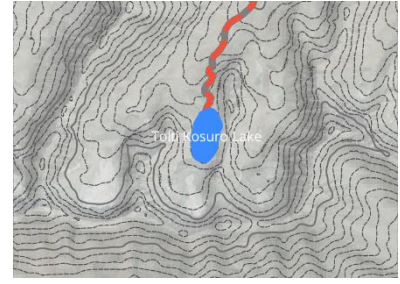
District: Kharmang
Closest Landmark: Hargosil
Road Distance: 136.2 kms
Tracking Distance: 13.0 kms
Lake Size: 23.5 ha
Elevation: 4745 m
Coordinates: 34.78848507,
 75.99469472

Staqbuchan Lake



District: Kharmang
Closest Landmark: Manthokha
Road Distance: 59.3 kms
Tracking Distance: 30.1 kms
Lake Size: 3.5 ha
Elevation: 4695 m
Coordinates: 34.87499178,
 75.94731579

Tolti Kosuro Lake



District: Kharmang
Closest Landmark: Kusuro Tolti
Road Distance: 83.5 kms
Tracking Distance: 9.5 kms
Lake Size: 9.8 ha
Elevation: 4799 m
Coordinates: 34.90695853,
 76.01646782

Blind Lake



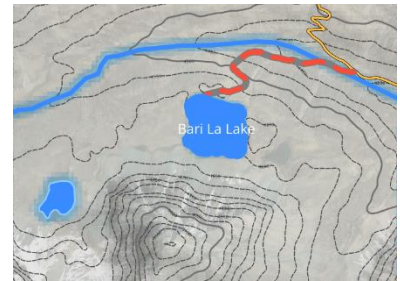
District: Shigar
Closest Landmark: Lamsa
Road Distance: 20.5 kms
Tracking Distance: 6.61 kms
Lake Size: 22.8 ha
Elevation: 2232 m
Coordinates: 35.36256400,
 75.70222665

Aqasimia Lake



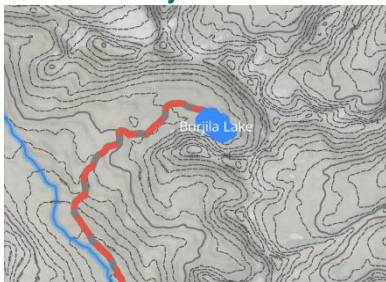
District: Skardu
Closest Landmark: Kachura
Road Distance: 26.0 kms
Tracking Distance: 0.7 kms
Lake Size: 0.7 ha
Elevation: 2260 m
Coordinates: 35.43083284,
 75.45861980

Bari La Lake



National Park: DNP
Closest Landmark: Bari La
Road Distance: 65.9 kms
Tracking Distance: 1.0 kms
Lake Size: 19.5 ha
Elevation: 4602 m
Coordinates: 34.89291920,
 75.71249881

Burjila Lake



National Park: DNP
Closest Landmark: Deosai Road
Road Distance: 31.0 kms
Tracking Distance: 15.5 kms
Lake Size: 12.3 ha
Elevation: 4576 m
Coordinates: 35.17137395,
 75.52084896

Burzil Top Lake



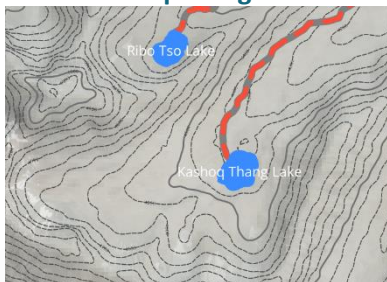
National Park: DNP
Closest Landmark: Sheosar Lake
Road Distance: 67.7 kms
Tracking Distance: 15.8 kms
Lake Size: 15.5 ha
Elevation: 4239 m
Coordinates: 34.91938671,
 75.18851441

Imarsaa Lake



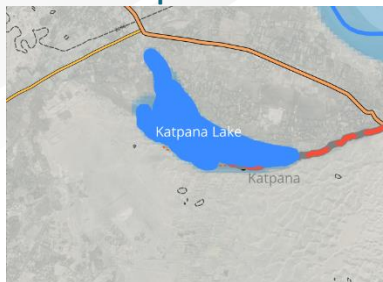
National Park: DNP
Closest Landmark: Deosai Road
Road Distance: 31.1 kms
Tracking Distance: 4.1 kms
Lake Size: 11.7 ha
Elevation: 4390 m
Coordinates: 35.09569432,
 75.57919191

Kashoq Thang Lake



District: Skardu
Closest Landmark: Shilla
Road Distance: 54.3 kms
Tracking Distance: 22.2 kms
Lake Size: 6.2 ha
Elevation: 4112 m
Coordinates: 35.11376366,
75.66274538

Katpana Lake



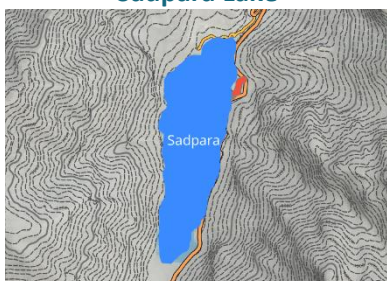
District: Skardu
Closest Landmark: Katpana
Road Distance: 6.6 kms
Tracking Distance: 0 kms
Lake Size: 45.3 ha
Elevation: 2219 m
Coordinates: 35.31641917,
75.57736046

Ribo Tso Lake



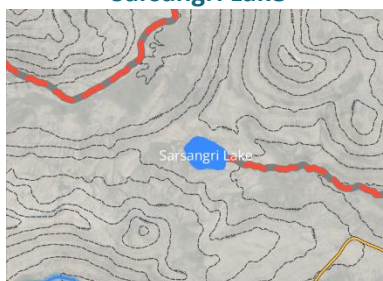
District: Skardu
Closest Landmark: Shilla
Road Distance: 54.3 kms
Tracking Distance: 22.5 kms
Lake Size: 3.8 ha
Elevation: 4566 m
Coordinates: 35.12462266,
75.65515267

Sadpara Lake



District: Skardu
Closest Landmark: Sadpara Lake
Road Distance: 8.3 kms
Tracking Distance: 0 kms
Lake Size: 221 ha
Elevation: 2663 m
Coordinates: 35.22876262,
75.63012974

Sarsangri Lake



National Park: DNP
Closest Landmark: Kalapani Camp
Road Distance: 57.6 kms
Tracking Distance: 21.8 kms
Lake Size: 13.5 ha
Elevation: 4170 m
Coordinates: 34.92190521,
75.24957337

Sheosar Lake



National Park: DNP
Closest Landmark: Sheosar Lake
Road Distance: 67.7 kms
Tracking Distance: 0 kms
Lake Size: 133 ha
Elevation: 4155 m
Coordinates: 34.99091663,
75.23650106

Tormik Lake



District: Skardu
Closest Landmark: Hurimal
Road Distance: 70.4 kms
Tracking Distance: 4.6 kms
Lake Size: 4.9 ha
Elevation: 4254 m
Coordinates: 35.64527213,
75.24450867

Upper Kachura Lake



District: Skardu
Closest Landmark: Kachura
Road Distance: 28.6 kms
Tracking Distance: 0.4 kms
Lake Size: 21.9 ha
Elevation: 2308 m
Coordinates: 35.44692133,
75.44559457

Yourvali Lake



National Park: DNP
Closest Landmark: Sheosar Lake
Road Distance: 67.7 kms
Tracking Distance: 16.9 kms
Lake Size: 15 ha
Elevation: 4274 m
Coordinates: 34.92032624,
75.17678161

REFERENCES

- Ahmad, S., Abbas, T., Nawaz, M., & Khan, A. (2021). Hydrological characteristics and water quality assessment of Rush Lake, Karakoram Range, Gilgit Baltistan, Pakistan. *Journal of Mountain Science*, 18(2), 538-550. <https://doi.org/10.1007/s11629-020-6178-1>
- Abbas, T., Ahmad, S., Nawaz, M., & Hussain, M. (2020). Potential of remote sensing and GIS for wetland monitoring and management in Gilgit Baltistan, Pakistan. *Remote Sensing Applications: Society and Environment*, 18, 100338. <https://doi.org/10.1016/j.rsase.2020.100338>
- Ali, H., Abbas, F., Shah, S. M. M., & Ali, A. (2017). Vegetation analysis of wetlands of Gilgit-Baltistan, Pakistan. *Journal of Biodiversity and Environmental Sciences*, 10(3), 83-93.
- Ali, H., Shah, S. M. M., Abbas, F., & Ali, A. (2016). Socio-economic importance of wetlands of Gilgit-Baltistan, Pakistan. *International Journal of Biosciences*, 9(5), 270-277.
- Ali, S. Z., Ahmad, S., & Nawaz, M. (2018). Biodiversity and conservation status of wetlands in Gilgit Baltistan, Pakistan. *Journal of Environmental Planning and Management*, 61(11), 1887-1900. <https://doi.org/10.1080/09640568.2017.1398607>
- Ali, S. Z., Ahmad, S., & Nawaz, M. (2019). Ecotourism potential of wetlands in Gilgit Baltistan, Pakistan. *Mountain Research and Development*, 39(3), R1-R13. <https://doi.org/10.1659/MRD-JOURNAL-D-18-00094.1>
- Amin, M. A., Nawaz, M., Ahmad, S., & Abbas, T. (2019). Impact of climate change on wetlands of Gilgit Baltistan, Pakistan. *Journal of Mountain Science*, 16(8), 1825-1836. <https://doi.org/10.1007/s11629-019-5409-6>
- Aziz, I., Ahmad, S., Nawaz, M., & Abbas, T. (2019). Impact of land use change on the ecological health of wetlands in Gilgit Baltistan, Pakistan. *Environmental Monitoring and Assessment*, 191(11), 680. <https://doi.org/10.1007/s10661-019-7802-6>
- Defourny, P., Lamarche, C., Brockmann, C., Boettcher, M., Bontemps, S., De Maet, T., Duveiller, G. L., Harper, K., Hartley A., Kirches, G., Moreau, I., Peylin, P., Ottlé, C., Radoux J., Van Bogaert, E., Ramoino, F., Albergel, C., and Arino, O.: Observed annual global land-use change from 1992 to 2020 three times more dynamic than reported by inventory-based statistics, in preparation, 2023.
- Hussain, F., Abbasi, A. M., & Abbas, F. (2015). Floristic diversity of wetlands of Gilgit-Baltistan, Pakistan. *Pakistan Journal of Botany*, 47(5), 1845-1854.
- Hussain, M., Ahmad, S., Nawaz, M., & Abbas, T. (2018). Fish diversity and distribution in the wetlands of Gilgit Baltistan, Pakistan. *Environmental Monitoring and Assessment*, 190(2), 106. <https://doi.org/10.1007/s10661-018-648>
- Hussain, M., Ahmad, S., Nawaz, M., & Abbas, T. (2019). Ecological status assessment of Kanday Nallah wetland in Gilgit Baltistan, Pakistan. *Journal of Mountain Science*, 16(5), 1065-1078. <https://doi.org/10.1007/s11629-018-5277-4>

- Karra, Kontgis, et al. "Global land use/land cover with Sentinel-2 and deep learning." IGARSS 2021-2021 IEEE International Geoscience and Remote Sensing Symposium. IEEE, 2021.
- Mahmood, K., Nawaz, M., Ahmad, S., & Abbas, T. (2019). Physico-chemical properties of Phander Lake, Gilgit Baltistan, Pakistan. *Journal of Mountain Science*, 16(3), 652-663. <https://doi.org/10.1007/s11629-018-5084-z>
- Pekel J. F., Cottam, A., Gorelick, N., Belward, A. S., High-resolution mapping of global surface water and its long-term changes. *Nature* 540, 418-422 (2016). (doi:10.1038/nature20584)
- Shah, S. M. M., Ali, S. Z., Ali, W., & Ahmad, S. (2020). Ecosystem services of wetlands in Gilgit Baltistan, Pakistan. *Ecosystem Health and Sustainability*, 6(1), 1724994. <https://doi.org/10.1080/20964129.2020.1724994>

FOREST, WILDLIFE AND PARKS DEPARTMENT
GOVERNMENT OF GILGIT-BALTISTAN



Wildlife & Parks Circle,
Forest Complex, Jutial, Gilgit,
Gilgit-Baltistan, Pakistan
Tel: +92 5811-920146
Fax: +92 5811-920273
Website: <https://fwegb.gov.pk>